

23 Wattlecliffe Drive Blaxland NSW

4 2 2

LOCATION - Walk to rail services, children's playground, shopping centre, cafes, restaurants, shops, bus and schools (pre, primary and high), oval, netball courts, gym and bush walks.

STYLE - Celebrating, size, elegance style and warmth. Modern, immaculate and low maintenance two storey rendered residence in high end manicured estate.

LAYOUT- Living room, large dining room, 4 oversized bedrooms, all with built in robes, master bedroom with plantation shutters, ensuite (stone tops and dual basins) and walk in robe. 2.5 bathrooms overall (main also with stone tops and dual basins)

FEATURES - Open plan kitchen with granite countertops, breakfast bar and Smeg appliances, ducted reverse cycle air conditioning, high ceilings with decorative cornices,

Type : House
Price : \$ 1,091,500
Land Size : 410 sqm
View : <https://www.chapmanrealestate.com.au/sale/nsw/blue-mountains-surrounds/blaxland/residential/house/7161486>



Milton Player
02 4739 4311

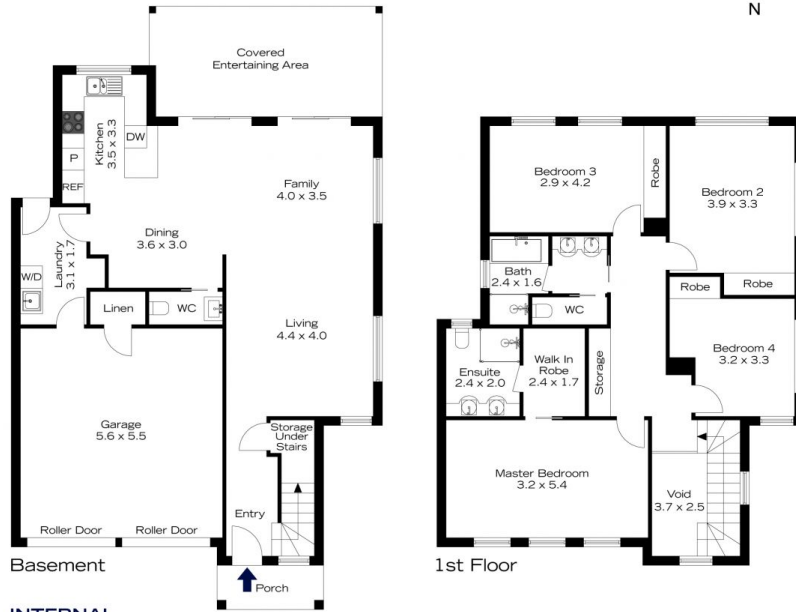


Sharon Lampert
02 4739 4311

[For full version visit the website](https://www.chapmanrealestate.com.au)

<https://www.chapmanrealestate.com.au>

23 WATTLECLIFFE DRIVE, BLAXLAND



INTERNAL
223 m²

EXTERNAL
22 m²

TOTAL
245 m²



The floor plan is not to scale; measurements are indicative and in metres. Exterior elements are not in position. Plans should not be relied on. Interested parties should make and rely on their own enquiries.

23 WATTLECLIFFE DRIVE, BLAXLAND



INTERNAL
223 m²

EXTERNAL
22 m²

TOTAL
245 m²



The floor plan is not to scale; measurements are indicative and in metres. All features included in this 3D plan are for inspiration purposes only. This is not an exact replica of the property or the position of exterior elements. Plans should not be relied on. Interested parties should make and rely on their own enquiries.