



6 Balaclava Road Emu Heights NSW

4 2 4

LOCATION: Nestled in the foothills of the lower Blue Mountains in a quiet and family friendly pocket of Emu Heights. Easy living is assured with local school, childcare, shops, park and reserve within 350m (approx.), a short 10 min stroll to a secluded fishing spot of the Nepean River and McCann's Island Waterfall, and easy access to local amenities, rail services, Lennox Village, Penrith and the M4 motorway.

STYLE: North facing two-storey quality family home of brick construction and tile roof set on a sprawling, flat and landscaped 916sqm (approx.) block.

LAYOUT: With a free flowing, versatile and open plan layout, the main dwelling consists of 2 living rooms, formal dining, 4 great sized bedrooms with built in robes, master with ensuite, 3 way main bathroom, downstairs powder

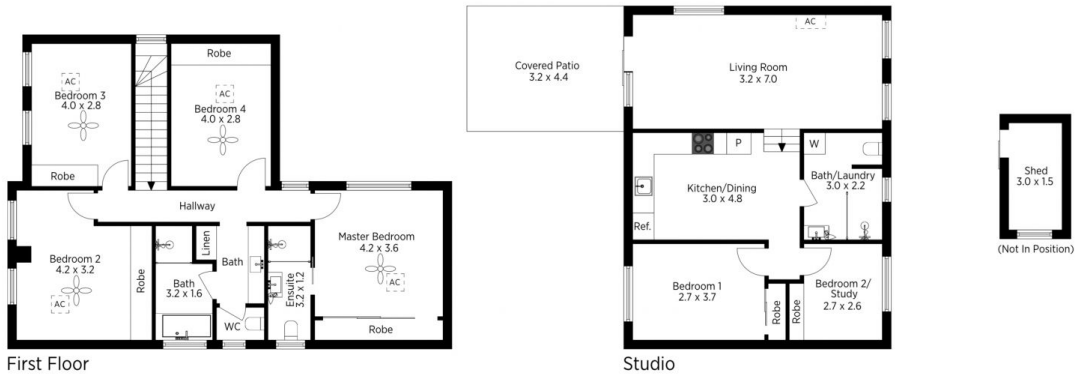
Type : House
Price : \$ 1,211,253
Land Size : 916 sqm
View : <https://www.chapmanrealestate.com.au/sale/nsw/western-sydney/emu-heights/residential/house/7161477>



Glen Power
02 4739 4311

[For full version visit the website](https://www.chapmanrealestate.com.au)

<https://www.chapmanrealestate.com.au>



The floor plan is not to scale; measurements are indicative and in metres. Exterior elements are not in position. Plans should not be relied on. Interested parties should make and rely on their own enquiries.

Produced by DIAKRIT

6 Balaclava Road, Emu Heights



The floor plan is not to scale; measurements are indicative and in metres. All features included in this 3D plan are for inspiration purposes only. This is not an exact replica of the property or the position of exterior elements. Plans should not be relied on. Interested parties should make and rely on their own enquiries.

Produced by DIAKRIT

6 Balaclava Road, Emu Heights

