

15 Bunbinla Avenue Mount Riverview NSW

3 1 3

SITUATION - Set on a near level block with easy access to Mount Riverview shops, cafe, bus stop, bush walks and parks this home is perfectly placed. Also just moments to popular preschool and Primary school. Set in a quiet no through street.

STYLE - Brick and tile home with garage underneath. All the living and rooms are on one level within the home.

ACCOMMODATION - Offering surprising space with its 3 bedrooms with new BIR's to all, two separate living areas and an easy to work with layout.

FEATURES - The overall love and care this home has received for years gone by is very obvious upon inspection-

[For full version visit the website](https://www.chapmanrealestate.com.au)

Type : House
Price : \$ 840,000
Land Size : 581 sqm
View : <https://www.chapmanrealestate.com.au/sale/nsw/hawkesbury/mount-riverview/residential/house/7161468>



Chris Rayner
02 4739 6200

15 BUNBINLA AVENUE, MOUNT RIVERVIEW

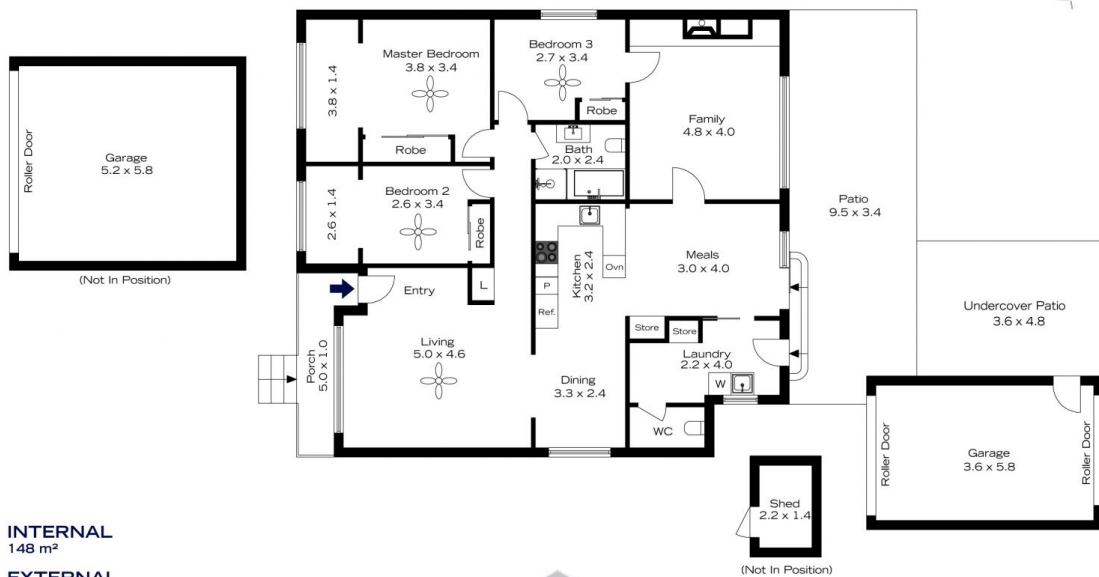


INTERNAL
148 m²
EXTERNAL
58 m²
TOTAL
206 m²



The floor plan is not to scale; measurements are indicative and in metres. All features included in this 3D plan are for inspiration purposes only. This is not an exact replica of the property or the position of exterior elements. Plans should not be relied on. Interested parties should make and rely on their own enquiries.

15 BUNBINLA AVENUE, MOUNT RIVERVIEW



INTERNAL
148 m²
EXTERNAL
58 m²
TOTAL
206 m²



The floor plan is not to scale; measurements are indicative and in metres. Exterior elements are not in position. Plans should not be relied on. Interested parties should make and rely on their own enquiries.