



### 39 Dawn Crescent Mount Riverview NSW

5 2 1

**LOCATION:** Nestled on a much loved tree lined street, within walking distance to local supermarket, restaurant, bus stop, public school, bush walks and park.

**STYLE:** Vibrant, bright and delightful this single level Lend Lease insulated brick cottage has a generous and dynamic layout, ideal for it's gorgeous location.

**LAYOUT:** 3 living rooms, dining room, 4 large bedrooms, huge master with ceiling fan and renovated ensuite with under floor heating.

**FEATURES:** Great size central country style kitchen with 900ml gas cooking, reverse cycle air conditioning, down lights, polished timber floorboards, carpet, loads of natural light, warm in winter, cool in summer, modern decor, paved alfresco, level easy care back yard, shed, vegetable garden, lock up garage.

**Type** : House  
**Land Size** : 733 sqm  
**View** : <https://www.chapmanrealestate.com.au/sale/nsw/hawkesbury/mount-riverview/residential/house/7161467>



**Milton Player**  
02 4739 4311

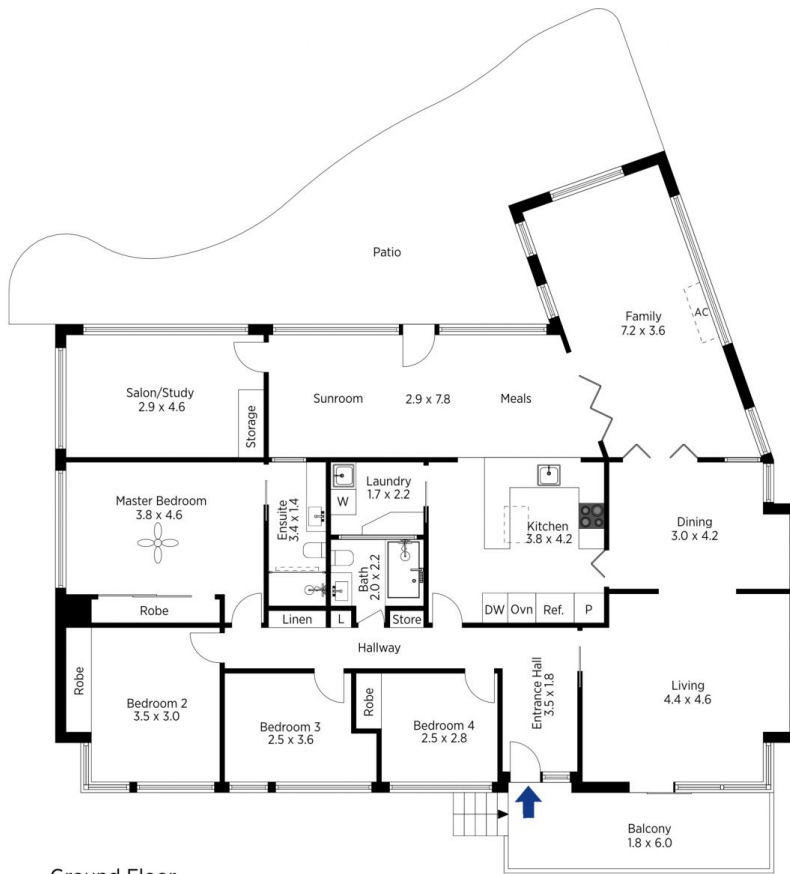


**Helen Harris**  
02 4751 8266

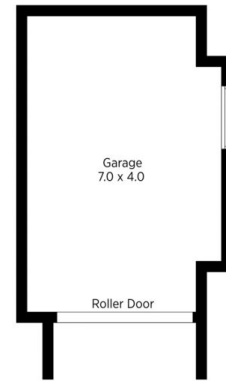
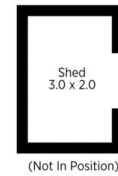
[For full version visit the website](https://www.chapmanrealestate.com.au)

<https://www.chapmanrealestate.com.au>





Ground Floor



Lower Ground Floor

The floor plan is not to scale; measurements are indicative and in metres. Exterior elements are not in position. Plans should not be relied on. Interested parties should make and rely on their own enquiries.

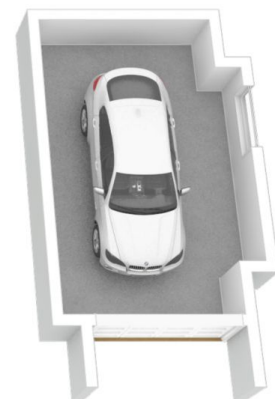
Produced by DIAKRIT

39 Dawn Crescent, Mount Riverview

Chapman



Ground Floor



Lower Ground Floor

The floor plan is not to scale; measurements are indicative and in metres. All features included in this 3D plan are for inspiration purposes only. This is not an exact replica of the property or the position of exterior elements. Plans should not be relied on. Interested parties should make and rely on their own enquiries.

Produced by DIAKRIT

39 Dawn Crescent, Mount Riverview

Chapman