



23 Loftus Street Lawson NSW

3 1 1

LOCATION: Situated within moments from Lawson village featuring an assortment of cafés, restaurants and other specialty stores. A short distance to bowling club, local co-op store and only 250m walk to Lawson Train station. With plenty of options for outdoor activities, Lawson offers a variety of walking tracks, aquatic centre and off leash dog park.

STYLE: Tastefully renovated this single level Mountains cottage, circa 1921, oozes with charm and period features while still offering modern luxury's and convenience. Nestled on a 897m2 block with beautiful landscaped gardens looking out to a bush backdrop.

LAYOUT: Three large bedrooms, the main featuring a private study and the second bedroom with walk in robe and ornamental fireplace. Elegant main bathroom,

Price : \$ 863,540
Land Size : 897 sqm
View : <https://www.chapmanrealestate.com.au/sale/nsw/blue-mountains-surrounds/lawson/residential/house/7161463>



Jonathan Crisp
02 4751 8266



James Simadas
02 4782 5045

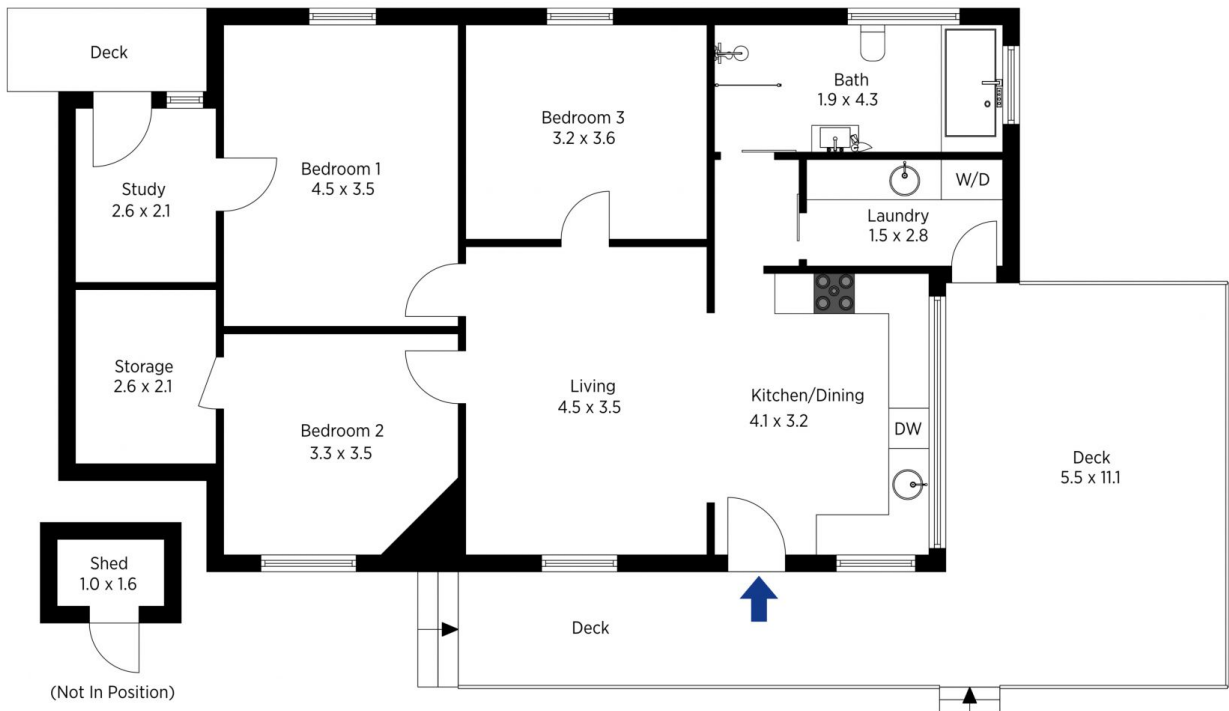


The floor plan is not to scale; measurements are indicative and in metres. All features included in this 3D plan are for inspiration purposes only. This is not an exact replica of the property or the position of exterior elements. Plans should not be relied on. Interested parties should make and rely on their own enquiries.

Produced by DIAKRIT

23 Loftus Street, Lawson

Chapman



The floor plan is not to scale; measurements are indicative and in metres. Exterior elements are not in position. Plans should not be relied on. Interested parties should make and rely on their own enquiries.

Produced by DIAKRIT

23 Loftus Street, Lawson

Chapman