



2A Birdwood Avenue Winmalee NSW

2 1 2

LOCATION - Located on the border of Springwood in close proximity to bus & schools and easy access to Winmalee & Springwood shops.

STYLE - Split level brick and tile home set on 474.2 m2 block, landscaped for easy care.

LAYOUT - 2 living rooms, 2 double bedrooms both with built ins and fans, central kitchen and dining, undercover access from double carport.

FEATURES - Brivis ducted gas heating, gas bayonets, air conditioning, LED downlights, new contemporary bathroom, euro style laundry, sliding doors open to merbau timber deck, great condition throughout.

Property also known as 137A Hawkesbury Road, Winmalee

[For full version visit the website](https://www.chapmanrealestate.com.au)

Type : House
Price : \$ 665,000
Land Size : 474.2 sqm
View : <https://www.chapmanrealestate.com.au/sale/nsw/hawkesbury/winmalee/residential/house/7161447>



Jonathan Crisp
02 4751 8266

Internal Area : 95 sqm approx.
External Area : 65 sqm approx.
Total Area : 160 sqm approx.



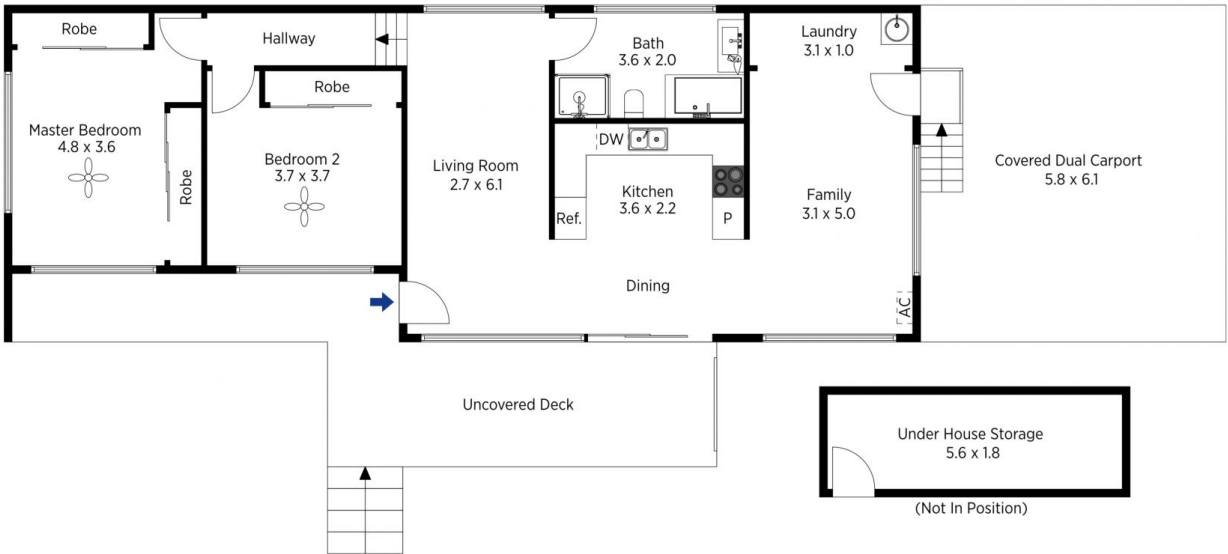
The floor plan is not to scale; measurements are indicative and in metres. All features included in this 3D plan are for inspiration purposes only. This is not an exact replica of the property or the position of exterior elements. Plans should not be relied on. Interested parties should make and rely on their own enquiries.

Produced by DIAKRIT

2A Birdwood Avenue, Winmalee

Chapman

Internal Area : 95 sqm approx.
External Area : 65 sqm approx.
Total Area : 160 sqm approx.



The floor plan is not to scale; measurements are indicative and in metres. Exterior elements are not in position. Plans should not be relied on. Interested parties should make and rely on their own enquiries.

Produced by DIAKRIT

2A Birdwood Avenue, Winmalee

Chapman