



### 8 Emu Road Glenbrook NSW

3 1 1

**LOCATION:** Coveted village side location within a 1.1km radius (approx.) to Glenbrook village, schools, ovals, parks, BBQ facilities, lookouts, bush walks, bike trails, tennis & netball courts, cinema and rail. The size of the land & location within a National park, coupled with its proximity to Sydney (under 50min drive) makes it a very rare find in a much sought after locale.

**STYLE:** Single level cottage with Colorbond roof nestled on a level and expansive approx. 1,100sqm parcel of land (18.29m wide x 60.35m long), offering endless scope and an abundance of space to design and execute your dream Glenbrook residence. First time offered to market in 34 years.

**LAYOUT:** Uncomplicated floor plan comprising of light filled lounge & dining, 3 bedrooms, full bathroom with separate

**Type** : House  
**Price** : \$ 1,507,518  
**Land Size** : 1100 sqm  
**View** : <https://www.chapmanrealestate.com.au/sale/nsw/blue-mountains-surrounds/glenbrook/residential/house/7161444>

[For full version visit the website](#)

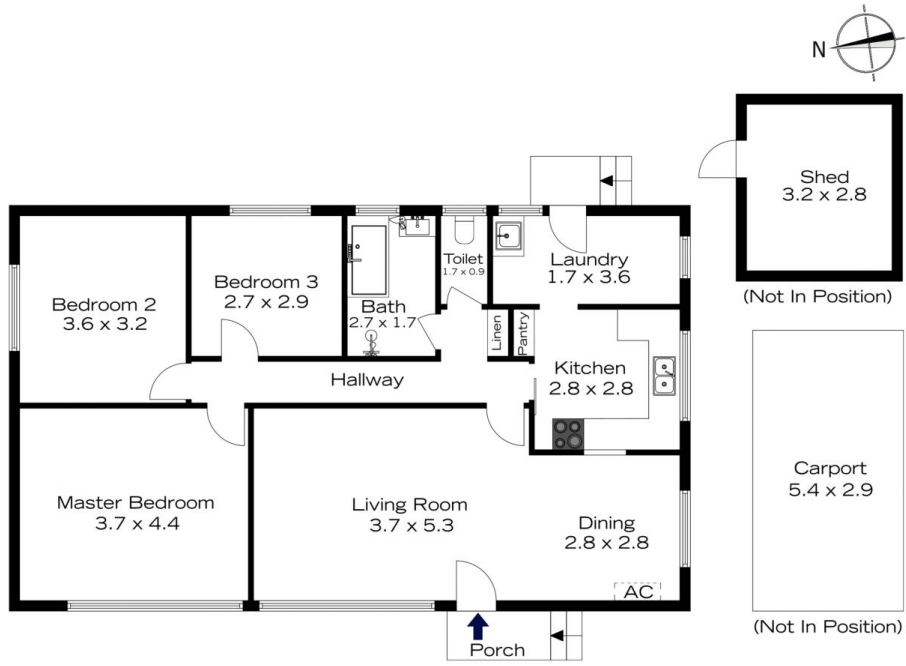


**Glen Power**  
02 4739 4311



**Helen Harris**  
02 4751 8266

# 8 EMU ROAD, GLENBROOK



**INTERNAL**  
90 m<sup>2</sup>

**EXTERNAL**  
3 m<sup>2</sup>

**TOTAL**  
93 m<sup>2</sup>



The floor plan is not to scale; measurements are indicative and in metres. Exterior elements are not in position. Plans should not be relied on. Interested parties should make and rely on their own enquiries.

# 8 EMU ROAD, GLENBROOK



**INTERNAL**  
90 m<sup>2</sup>

**EXTERNAL**  
3 m<sup>2</sup>

**TOTAL**  
93 m<sup>2</sup>



The floor plan is not to scale; measurements are indicative and in metres. All features included in this 3D plan are for inspiration purposes only. This is not an exact replica of the property or the position of exterior elements. Plans should not be relied on. Interested parties should make and rely on their own enquiries.