



### 3 Lee Road Winmalee NSW

3 1 1

**LOCATION** - Generous corner block in popular area, conveniently located within 1.5km to Winmalee Shopping Village, schools, Summerhayes Park, medical centres and within 110m to bus stop.

**STYLE** - Light filled, single level brick home with tile roof on mainly flat and useable 796 m<sup>2</sup> block.

**LAYOUT** - Formal lounge which flows into dining area and central kitchen, 3 bedrooms, 2 large beds both with built in robes, 3rd smaller bed/study, neat and original bathroom with separate toilet, laundry with external access, easy internal access to lock up garage.

**FEATURES** - Generous kitchen with ample storage & bench space and glorious valley & backyard views. Stunning verandah's front & back, split system AC, gas heating, instant gas hot water, ceiling fans, carpet,

**Type** : House  
**Price** : \$ 610,000  
**Land Size** : 796.7 sqm  
**View** : <https://www.chapmanrealestate.com.au/sale/nsw/hawkesbury/winmalee/residential/house/7161434>



**Helen Harris**  
02 4751 8266



**Mark Poole**  
02 4751 8266

[For full version visit the website](https://www.chapmanrealestate.com.au)

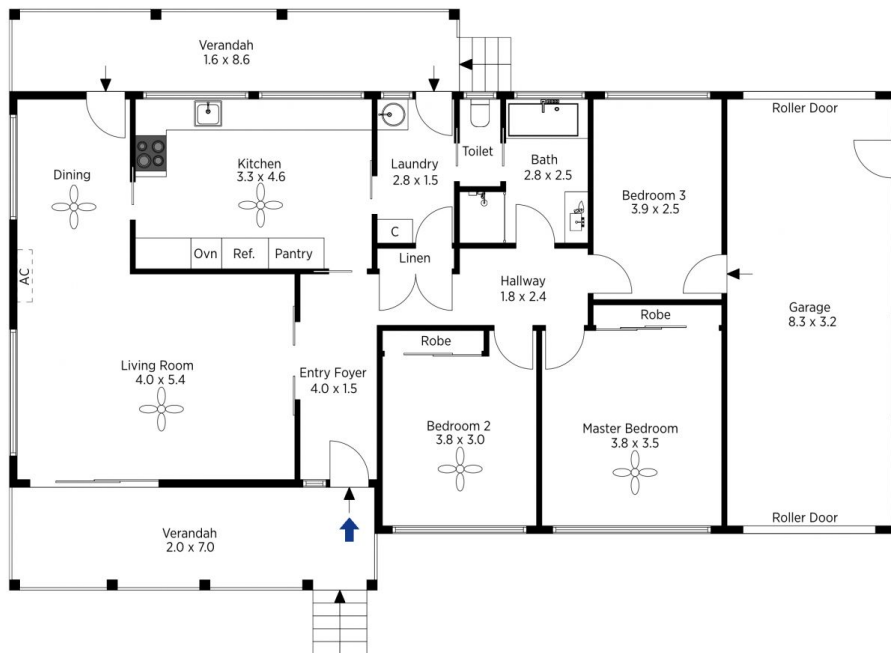


The floor plan is not to scale; measurements are indicative and in metres. All features included in this 3D plan are for inspiration purposes only. This is not an exact replica of the property or the position of exterior elements. Plans should not be relied on. Interested parties should make and rely on their own enquiries.

Produced by DIAKRIT

3 Lee Road, Winmalee

Chapman



Off-Street Parking  
16.8 x 2.8

(Not in Position)

The floor plan is not to scale; measurements are indicative and in metres. Exterior elements are not in position. Plans should not be relied on. Interested parties should make and rely on their own enquiries.

Produced by DIAKRIT

3 Lee Road, Winmalee

Chapman