



### 19 Marshall Road Mount Riverview NSW

3 2 2

**LOCATION** - Popular area, quiet street, leafy setting, close to shops, rail & parks.

**STYLE** - Single level brick and tile home renovated throughout, set on level 689.2 m2 block.

**LAYOUT** - 3 living rooms (including huge separate rumpus), 3 bedrooms, main with ensuite and robe, modern kitchen with dishwasher, gas cooktops & pantry, internal laundry, double lock up garage with remote door.

**FEATURES** - Ducted air conditioning, new carpets, new light fittings, modern bathrooms, plantation shutters, natural gas, huge inground pool with spa, level grassy yard with outdoor BBQ, huge games room ideal for business, family retreat or possible conversion to granny flat (subject to council approval).

**Type** : House  
**Price** : \$ 775,000  
**Land Size** : 689.2 sqm  
**View** : <https://www.chapmanrealestate.com.au/sale/nsw/hawkesbury/mount-riverview/residential/house/7161433>



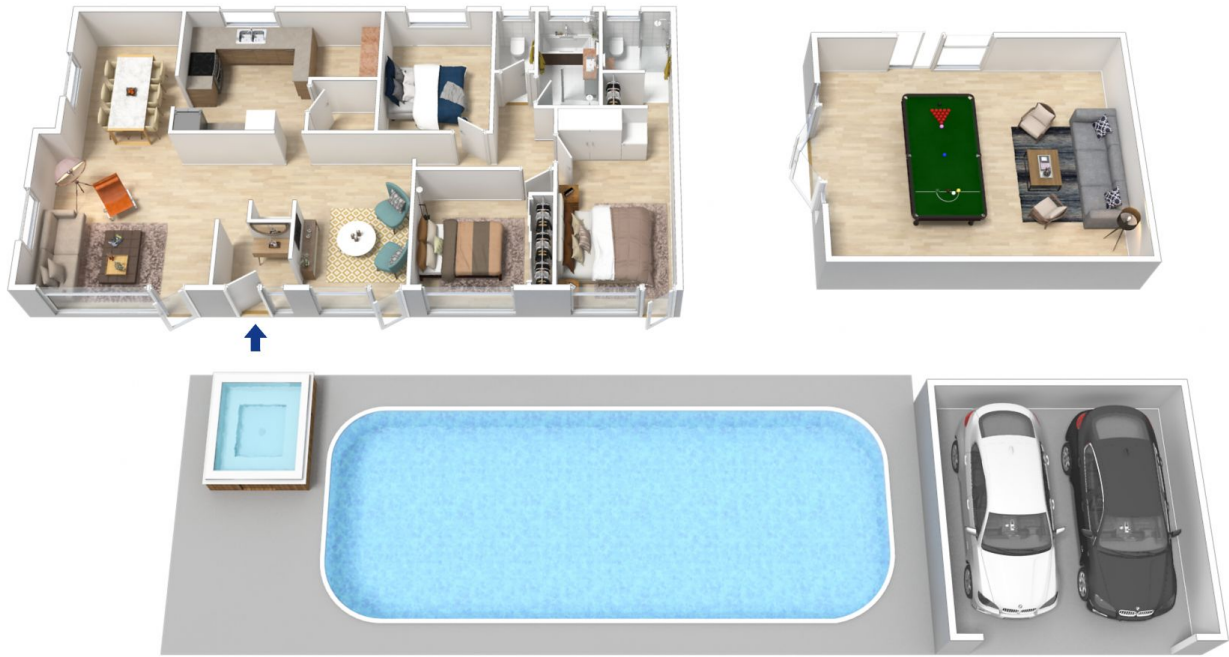
**Jonathan Crisp**  
02 4751 8266



**Mark Poole**  
02 4751 8266

[For full version visit the website](https://www.chapmanrealestate.com.au)

<https://www.chapmanrealestate.com.au>

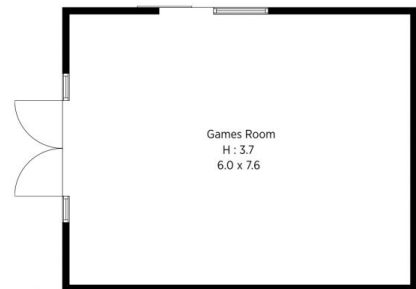
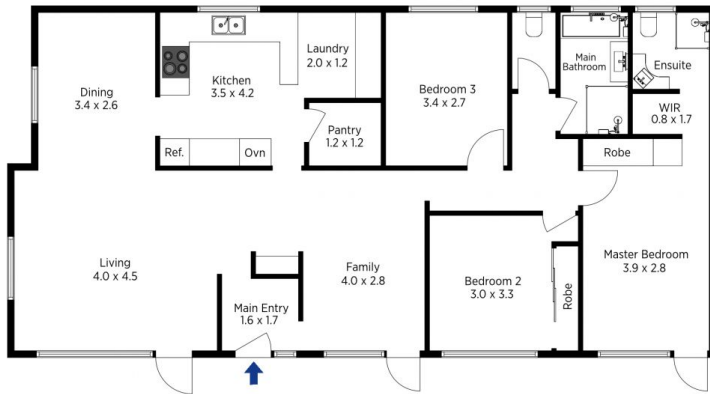


The floor plan is not to scale; measurements are indicative and in metres. All features included in this 3D plan are for inspiration purposes only. This is not an exact replica of the property or the position of exterior elements. Plans should not be relied on. Interested parties should make and rely on their own enquiries.

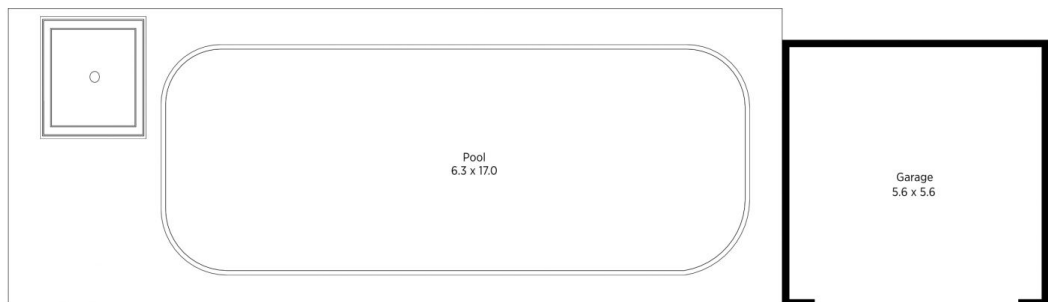
Produced by DIAKRIT

19 Marshall Road, Mount Riverview

Chapman



(Not In Position)



(Not In Position)

The floor plan is not to scale; measurements are indicative and in metres. Exterior elements are not in position. Plans should not be relied on. Interested parties should make and rely on their own enquiries.

Produced by DIAKRIT

19 Marshall Road, Mount Riverview

Chapman