



5 Thomas Way Blaxland NSW

5 3 2

LOCATION - This generously proportioned residence is positioned in a small and peaceful estate filled with newer builds. Only a stone's throw from Mitchell's Pass, you have quick and easy access to Emu Plains and Penrith, and this home is only 2 minutes to Blaxland Railway Station. Schools and daycare are in close proximity as well as the convenience of being only 1.3km from shops, cafes and more.

STYLE - This executive residence has new carpet and been freshly painted throughout. The kitchen and bathrooms are in excellent condition, with plenty of life left in them. The kitchen includes a stylish stone benchtop with a breakfast bar for the kids and ample storage space. The main bathroom boasts a spacious corner spa bath for an

Type : House
Price : \$ 1,440,000
Land Size : 756 sqm
View : <https://www.chapmanrealestate.com.au/sale/nsw/blue-mountains-surrounds/blaxland/residential/house/7161421>

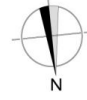


Kate Spence
02 4739 6200

[For full version visit the website](https://www.chapmanrealestate.com.au)

<https://www.chapmanrealestate.com.au>

5 THOMAS WAY, BLAXLAND



First Floor

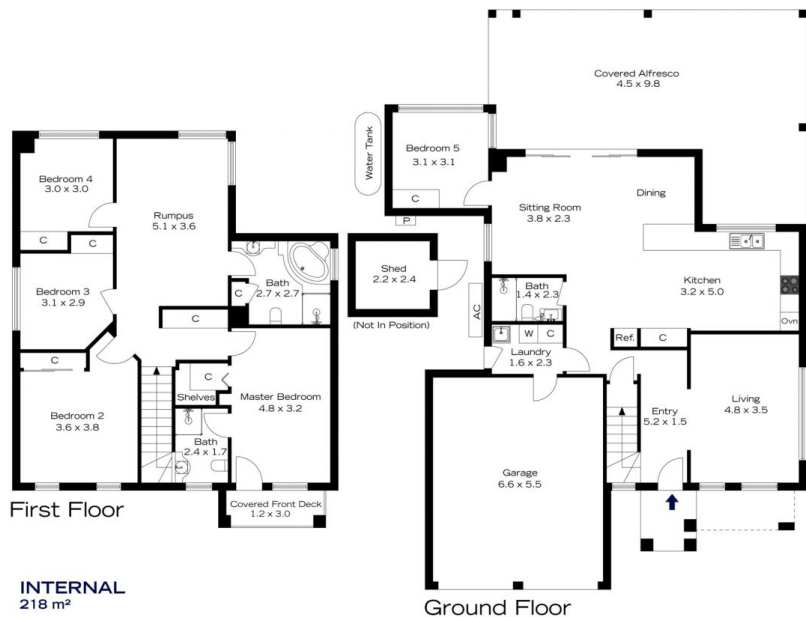
Ground Floor

INTERNAL
218 m²
EXTERNAL
60 m²
TOTAL
278 m²



The floor plan is not to scale; measurements are indicative and in metres. All features included in this 3D plan are for inspiration purposes only. This is not an exact replica of the property or the position of exterior elements. Plans should not be relied on. Interested parties should make and rely on their own enquiries.

5 THOMAS WAY, BLAXLAND



First Floor

Ground Floor

INTERNAL
218 m²
EXTERNAL
60 m²
TOTAL
278 m²



The floor plan is not to scale; measurements are indicative and in metres. Exterior elements are not in position. Plans should not be relied on. Interested parties should make and rely on their own enquiries.