



### 43 Ridge Street Lawson NSW

3 2

**LOCATION:** Situated within moments from Lawson village offering a variety of cafés, bakery, restaurants and other specialty stores. With plenty of options for outdoor activities, Lawson offers a variety of walking tracks, aquatic centre and an off leash dog park. A short 800m walk to Lawson primary school and only 1.2km to Lawson train station.

**STYLE:** This single level clad cottage offers charming and original features combined with stylish finishes to offer a true Mountains lifestyle property. Nestled on a 923m2 block with beautiful bush and valley views enjoyed from multiple indoor aspects and outdoor areas.

**LAYOUT:** Three oversized bedrooms, master with stylish

[For full version visit the website](https://www.chapmanrealestate.com.au)

**Type** : House  
**Price** : \$ 1,076,450  
**Land Size** : 923.2 sqm  
**View** : <https://www.chapmanrealestate.com.au/sale/nsw/blue-mountains-surrounds/lawson/residential/house/7161413>



**Jonathan Crisp**  
02 4751 8266



**Claudia Hayes**  
02 4751 8266

# 43 RIDGE STREET, LAWSON

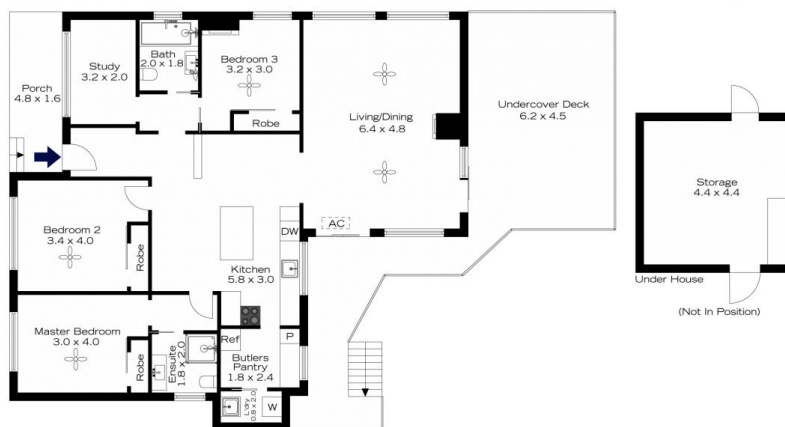


**INTERNAL**  
137 m<sup>2</sup>  
**EXTERNAL**  
53 m<sup>2</sup>  
**TOTAL**  
190 m<sup>2</sup>



The floor plan is not to scale; measurements are indicative and in metres. All features included in this 3D plan are for inspiration purposes only. This is not an exact replica of the property or the position of exterior elements. Plans should not be relied on. Interested parties should make and rely on their own enquiries.

# 43 RIDGE STREET, LAWSON



**INTERNAL**  
137 m<sup>2</sup>  
**EXTERNAL**  
53 m<sup>2</sup>  
**TOTAL**  
190 m<sup>2</sup>



The floor plan is not to scale; measurements are indicative and in metres. Exterior elements are not in position. Plans should not be relied on. Interested parties should make and rely on their own enquiries.