



8 Homedale Street Springwood NSW

3 2 2

LOCATION - Highly regarded as one of the best streets in Springwood, just a gentle walk (approx. 450m) to train, village, cafes, restaurants, specialty stores and main street attractions with bus stop at your door step (65m).

STYLE - Split level brick home with colourbond roof on generous 1345m2 (approx.) block with a flexible floor plan enabling your choice of layout to suit your specific household needs.

LAYOUT - Currently set up as 4 separate living spaces, plus an office, 3 double bedrooms (all with built in robes), stand alone bathroom, additional shower room and separate toilet, internal laundry with additional powder room and convenient external access.

FEATURES - Modern kitchen and stainless steel appliances and family meals area, high ceilings, 3 reverse

Type : House
Price : \$ 1,230,000
Land Size : 1345 sqm
View : <https://www.chapmanrealestate.com.au/sale/nsw/hawkesbury/springwood/residential/house/7161402>

[For full version visit the website](#)



Helen Harris
02 4751 8266



Rachel Power
02 4739 4311

Internal Area : 201 sqm approx.
 External Area : 30 sqm approx.
 Total Area : 231 sqm approx.



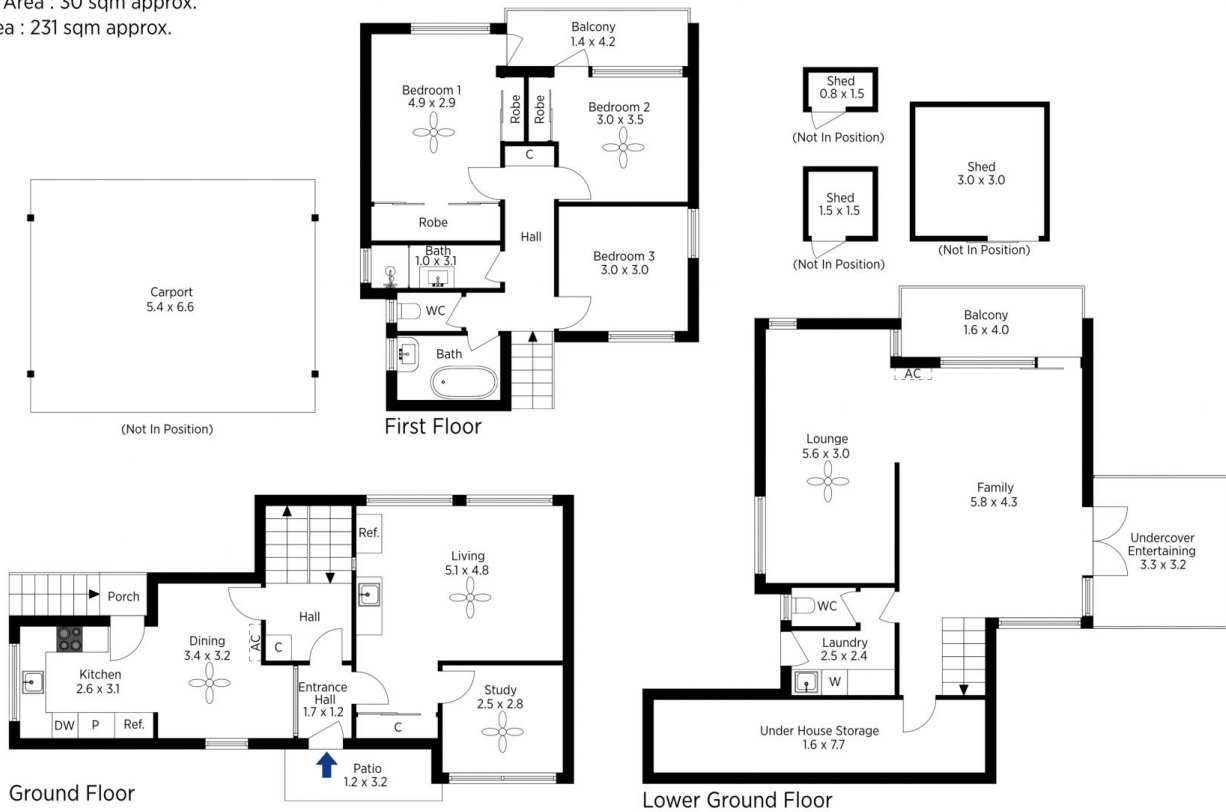
The floor plan is not to scale; measurements are indicative and in metres. All features included in this 3D plan are for inspiration purposes only. This is not an exact replica of the property or the position of exterior elements. Plans should not be relied on. Interested parties should make and rely on their own enquiries.

Produced by DIAKRIT

8 Homedale Street, Springwood

Chapman

Internal Area : 201 sqm approx.
 External Area : 30 sqm approx.
 Total Area : 231 sqm approx.



The floor plan is not to scale; measurements are indicative and in metres. Exterior elements are not in position. Plans should not be relied on. Interested parties should make and rely on their own enquiries.

Produced by DIAKRIT

8 Homedale Street, Springwood

Chapman