



7 Crampton Drive Springwood NSW

3 1 1

LOCATION - Peacefully set on a quiet street convenient to bus, schools, golf course and bushwalks, and a short drive to both Winmalee & Springwood villages, and bush aspect to rear.

STYLE - Single level home of brick construction and tile roof.

LAYOUT - Comfortable living space open to dining room, three bedrooms including generous main, beautifully renovated bathroom with separate toilet and updated internal laundry.

FEATURES - Original kitchen overlooking rear yard and open to dining room, reverse cycle A/C and slow combustion timber fireplace, polished timber floors, linen closet, paved outdoor space and BBQ area overlooking the grassy yard and bush outlook, neatly landscaped front yard

Type : House
Price : \$ 875,500
Land Size : 834.7 sqm
View : <https://www.chapmanrealestate.com.au/sale/nsw/hawkesbury/springwood/residential/home/7161401>



Mark Poole
02 4751 8266



James Simadas
02 4782 5045

[For full version visit the website](https://www.chapmanrealestate.com.au)

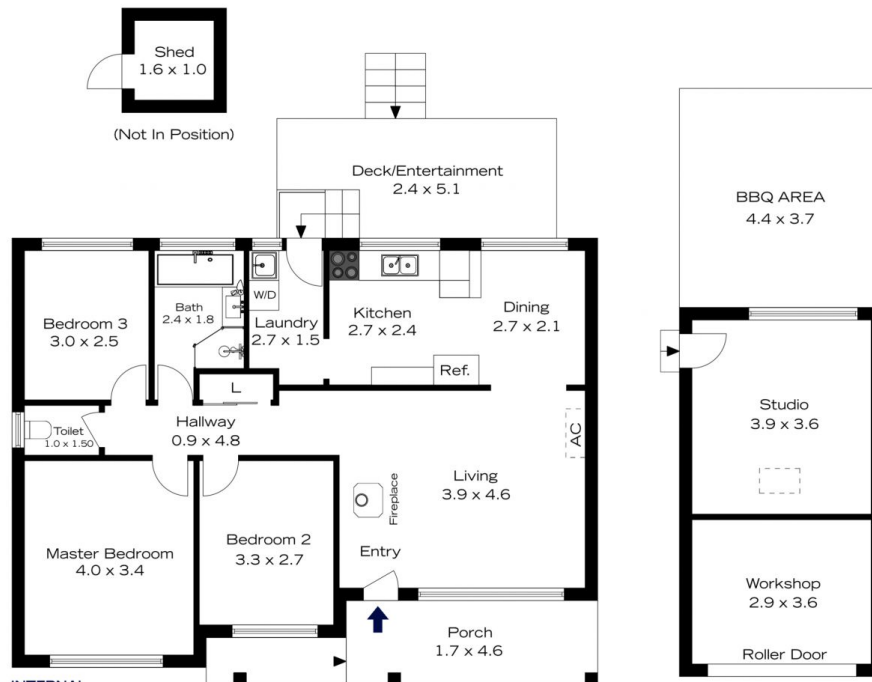
<https://www.chapmanrealestate.com.au>



TOTAL
161 m²



The floor plan is not to scale; measurements are indicative and in metres. All features included in this 3D plan are for inspiration purposes only. This is not an exact replica of the property or the position of exterior elements. Plans should not be relied on. Interested parties should make and rely on their own enquiries.



TOTAL
161 m²



The floor plan is not to scale; measurements are indicative and in metres. Exterior elements are not in position. Plans should not be relied on. Interested parties should make and rely on their own enquiries.