



## 14 Outlook Avenue Mount Riverview NSW

5 🛏 2 🚿 2 🚗

**LOCATION:** Set on approx 696sqm of gently sloping land in a peaceful pocket of Mt Riverview, walk approx 230m to Harley Park with kids equipment, approx. 700m to the highly sought after public school & 1km to local shops.

**STYLE:** High set, large family home of brick and tile roof construction. Built approx. 1980 offering loads of space, light & views.

**LAYOUT:** 2 storey design, offering 5 generous sized bedrooms (3 with built-in robes), master with ensuite + reverse cycle air conditioning, study. Taking advantage of the views upstairs are 2 separate living rooms with access to the deck, large dining area / kitchen + 5th bedroom.

**FEATURES:** Open plan modern style kitchen with gas cook top & dishwasher, timber floors, gas heater, reverse cycle air conditioning, ducted air upstairs, great undercover

**Type** : House  
**Price** : \$ 710,000  
**Land Size** : 696 sqm  
**View** : <https://www.chapmanrealestate.com.au/sale/nsw/hawkesbury/mount-riverview/residential/house/7161399>



**Milton Player**  
02 4739 4311

[For full version visit the website](https://www.chapmanrealestate.com.au)

<https://www.chapmanrealestate.com.au>



Ground Floor



First Floor

The floor plan is not to scale; measurements are indicative and in metres. All features included in this 3D plan are for inspiration purposes only. This is not an exact replica of the property or the position of exterior elements. Plans should not be relied on. Interested parties should make and rely on their own enquiries.

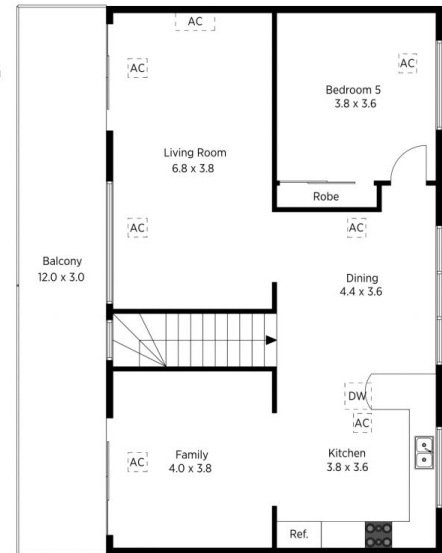
Produced by DIAKRIT

14 Outlook Avenue, Mount Riverview

Chapman



Ground Floor



First Floor

The floor plan is not to scale; measurements are indicative and in metres. Exterior elements are not in position. Plans should not be relied on. Interested parties should make and rely on their own enquiries.

Produced by DIAKRIT

14 Outlook Avenue, Mount Riverview

Chapman