



323 Macquarie Road Springwood NSW

3 1 1

LOCATION - R2 zoned and sitting on a large block of approx 1417m2 with an impressive street frontage of close to 20m, within 1.9km to local primary school, and a mere 500m flat walk to popular Springwood village, including retail shops, cafes, banks and train station providing an ultra easy commute into the CBD.

STYLE - Single level weatherboard cottage on brick foundations with tile roof, separate lock up garage and studio.

LAYOUT - Wide entrance hall, two living spaces, including sunroom with double doors flowing into large main open living & dining area with timber floorboards, three double size bedrooms all with built in robes, original main bathroom, generous linen cupboard and laundry with direct access to rear yard.

Type : House
Price : \$ 1,020,000
Land Size : 1435.4 sqm
View : <https://www.chapmanrealestate.com.au/sale/nsw/hawkesbury/springwood/residential/house/7161398>



Helen Harris
02 4751 8266

[For full version visit the website](https://www.chapmanrealestate.com.au)

<https://www.chapmanrealestate.com.au>

323 MACQUARIE ROAD, SPRINGWOOD



INTERNAL
144 m²

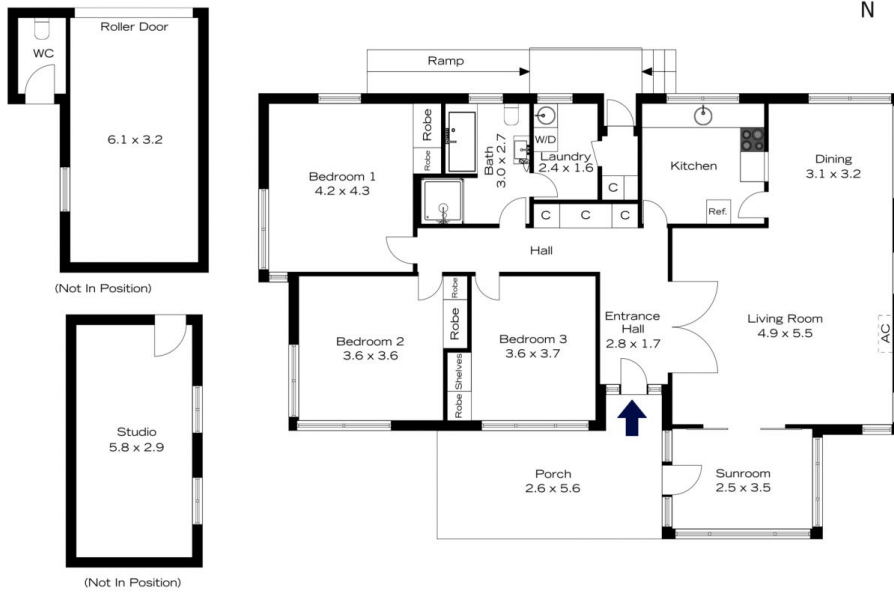
EXTERNAL
20 m²

TOTAL
164 m²



The floor plan is not to scale; measurements are indicative and in metres. All features included in this 3D plan are for inspiration purposes only. This is not an exact replica of the property or the position of exterior elements. Plans should not be relied on. Interested parties should make and rely on their own enquiries.

323 MACQUARIE ROAD, SPRINGWOOD



INTERNAL
144 m²

EXTERNAL
20 m²

TOTAL
164 m²



The floor plan is not to scale; measurements are indicative and in metres. Exterior elements are not in position. Plans should not be relied on. Interested parties should make and rely on their own enquiries.