



45 Emma Parade Winmalee NSW

4 2 4

LOCATION - Peacefully located on the high side at the end of a quiet cul-de-sac in family friendly pocket of Winmalee, 1.5km to local shops & schools, and within 3km to Winmalee Shopping Centre.

STYLE - Commanding 2 storey brick house with tile roof on generous 1445m² block with private bush outlook to front.

LAYOUT - 2 living spaces, glorious sunroom bathed in natural light and generous family/lounge, 4 bedrooms with built in robes, master on separate level with walk in robe plus additional storage and easy access to combined bathroom/laundry, 3 bedrooms upstairs with 3 way family bathroom.

FEATURES - Central kitchen with breakfast bar and an abundance of storage, reverse cycle A/C, slow combustion fireplace, instant gas hot water, covered outdoor

Type : House
Price : \$ 930,000
Land Size : 1445 sqm
View : <https://www.chapmanrealestate.com.au/sale/nsw/hawkesbury/winmalee/residential/house/7161397>



Helen Harris
02 4751 8266

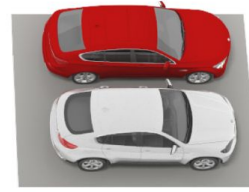
[For full version visit the website](https://www.chapmanrealestate.com.au)

<https://www.chapmanrealestate.com.au>

Internal Area : 232 sqm approx.
 External Area : 18 sqm approx.
 Total Area : 250 sqm approx.



First Floor



Ground Floor

The floor plan is not to scale; measurements are indicative and in metres. All features included in this 3D plan are for inspiration purposes only. This is not an exact replica of the property or the position of exterior elements. Plans should not be relied on. Interested parties should make and rely on their own enquiries.

Produced by DIAKRIT

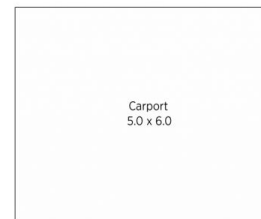
45 Emma Parade, Winmalee

Chapman

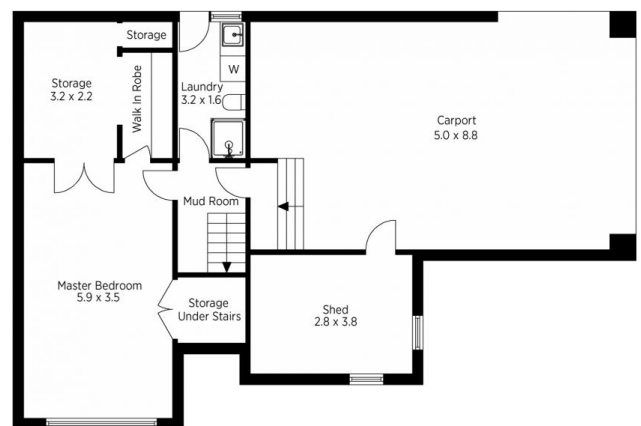
Internal Area : 232 sqm approx.
 External Area : 18 sqm approx.
 Total Area : 250 sqm approx.



First Floor



(Not In Position)



Ground Floor

The floor plan is not to scale; measurements are indicative and in metres. Exterior elements are not in position. Plans should not be relied on. Interested parties should make and rely on their own enquiries.

Produced by DIAKRIT

45 Emma Parade, Winmalee

Chapman