

8 Grahame Street Blaxland NSW

3 2 2

LOCATION- Sitting in a convenient location, this home presents the opportunity for an easy lifestyle. You can leave the car at home with Blaxland train station and shops, day care, parks and bushwalks all within approx. 1km.

STYLE- Single story at the front, double at the rear, brick and tile residence.

LAYOUT- Large lounge area, separate dining and an easy flow with the main bedroom down stairs and 2 large bedrooms upstairs.

FEATURES- With nice features like ducted air conditioning, light filled rooms and plenty of space, this home has lots to

[For full version visit the website](https://www.chapmanrealestate.com.au/sale/nsw/blue-mountains-surrounds/blaxland/residential/house/7161393)

Type : House
Price : \$ 850,100
Land Size : 582 sqm
View : <https://www.chapmanrealestate.com.au/sale/nsw/blue-mountains-surrounds/blaxland/residential/house/7161393>



Chris Rayner
02 4739 6200



Glen Power
02 4739 4311

Internal Area : 138 sqm approx.
External Area : 47 sqm approx.
Total Area : 185 sqm approx.



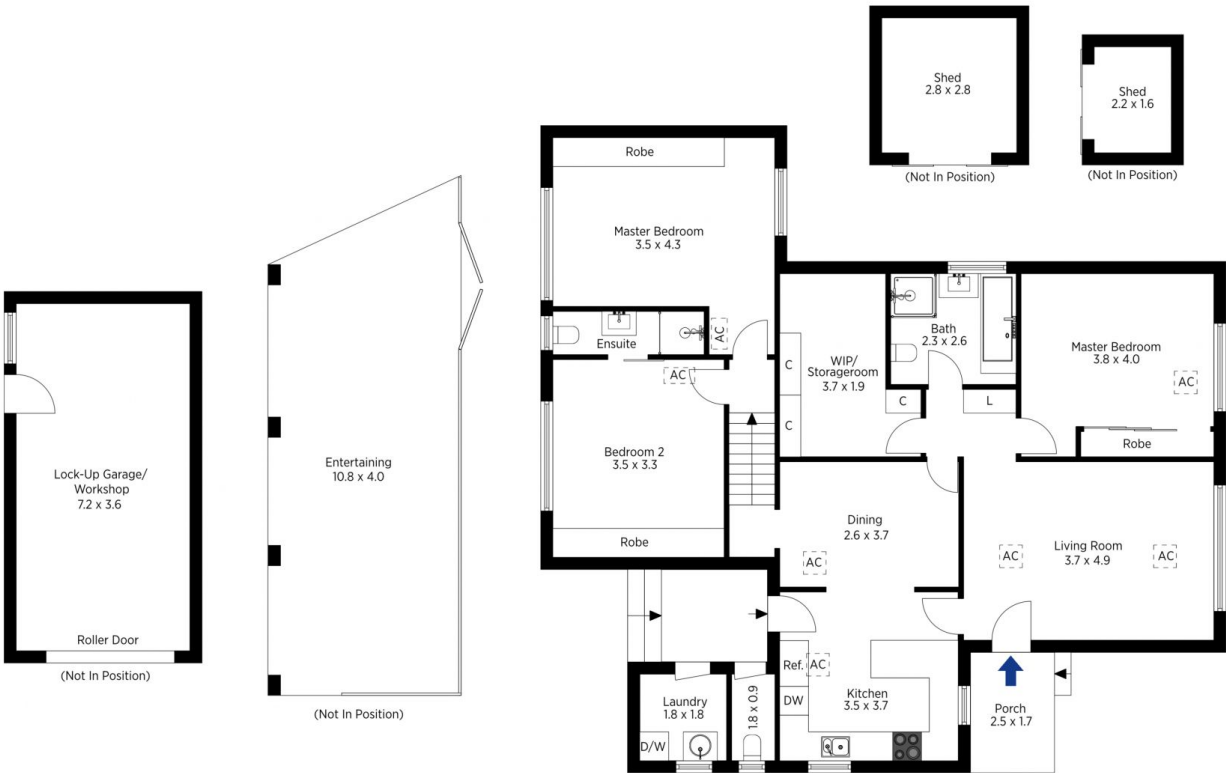
The floor plan is not to scale; measurements are indicative and in metres. All features included in this 3D plan are for inspiration purposes only. This is not an exact replica of the property or the position of exterior elements. Plans should not be relied on. Interested parties should make and rely on their own enquiries.

Produced by DIAKRIT

8 Grahame Street, Blaxland

Chapman

Internal Area : 138 sqm approx.
External Area : 47 sqm approx.
Total Area : 185 sqm approx.



The floor plan is not to scale; measurements are indicative and in metres. Exterior elements are not in position. Plans should not be relied on. Interested parties should make and rely on their own enquiries.

Produced by DIAKRIT

8 Grahame Street, Blaxland

Chapman