



113A Glenbrook Road Blaxland NSW

4 2 1

LOCATION - This beautiful residence is walking distance from the lovely Glenbrook Lagoon and a stone's throw from Mitchell's Pass. There is a playground and tennis courts around the corner at Lennox Park, Blaxland Station is three minutes away, and local schools and daycare are close at hand. With a bus stop out the front making the school runs easy. Glenbrook Village is only a few minutes by car, offering an array of shops, cafes and parks.

STYLE - This cottage home is expansive on the inside, with tastefully updated interiors. The high gloss timber flooring in the kitchen and dining adds to the overall charm of the property. The bathrooms have been stylishly renovated, with a modern Hampton's inspired look. Decorated with a neutral colour palette throughout, this home is easily styled

[For full version visit the website](https://www.chapmanrealestate.com.au)

Type : House
Price : \$ 1,270,000
Land Size : 553 sqm
View : <https://www.chapmanrealestate.com.au/sale/nsw/blue-mountains-surrounds/blaxland/residential/house/7161385>



Kate Spence
02 4739 6200



Sarah Watson
02 4739 4311

113A GLENBROOK ROAD, BLAXLAND



INTERNAL
172 m²

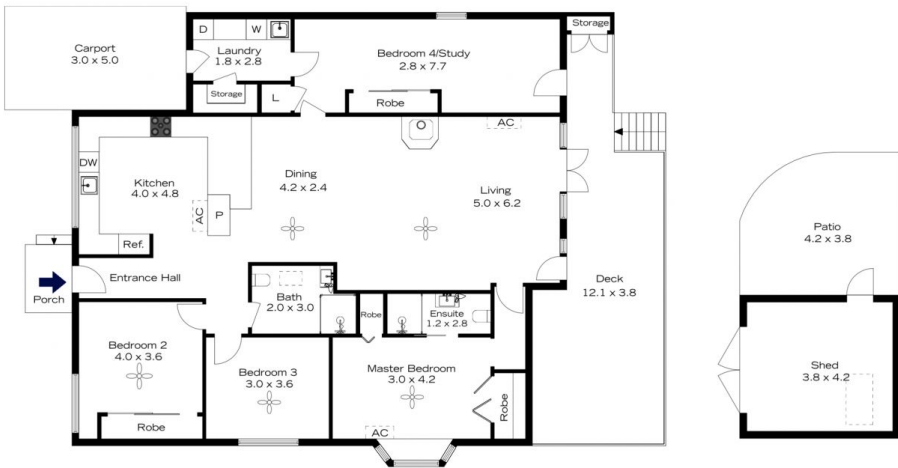
EXTERNAL
38 m²

TOTAL
210 m²



The floor plan is not to scale; measurements are indicative and in metres. All features included in this 3D plan are for inspiration purposes only. This is not an exact replica of the property or the position of exterior elements. Plans should not be relied on. Interested parties should make and rely on their own enquiries.

113A GLENBROOK ROAD, BLAXLAND



INTERNAL
172 m²

EXTERNAL
38 m²

TOTAL
210 m²



The floor plan is not to scale; measurements are indicative and in metres. Exterior elements are not in position. Plans should not be relied on. Interested parties should make and rely on their own enquiries.