



### 23 Fern Avenue Hazelbrook NSW

3 1 2

**LOCATION** - This fantastic entry-level property is in a whisper quiet pocket of Hazelbrook. Located only 2 minutes from Horseshoe Falls walking track, this home is perfect for those looking for a tree change. Hazelbrook Public School is only 4km away, and Hazelbrook Station is 4 minutes by car. The local shops are only 2.5km away from home, and Katoomba is only 20 minutes by car, and Springwood village is 16 minutes away, making it the perfect central location between major Blue Mountains townships.

**STYLE** - This property includes lots of original features, but it has been kept in good condition. There is great potential to add your own stylistic touch and make it truly yours by upgrading the kitchen and bathroom and re-carpeting living

[For full version visit the website](https://www.chapmanrealestate.com.au)

**Type** : House  
**Price** : \$ 750,143  
**Land Size** : 695 sqm  
**View** : <https://www.chapmanrealestate.com.au/sale/nsw/blue-mountains-surrounds/hazelbrook/residential/house/7161382>



**Kate Spence**  
02 4739 6200



**Rachel Power**  
02 4739 4311

Internal Area : 89 sqm approx.  
 External Area : 25 sqm approx.  
 Total Area : 114 sqm approx.



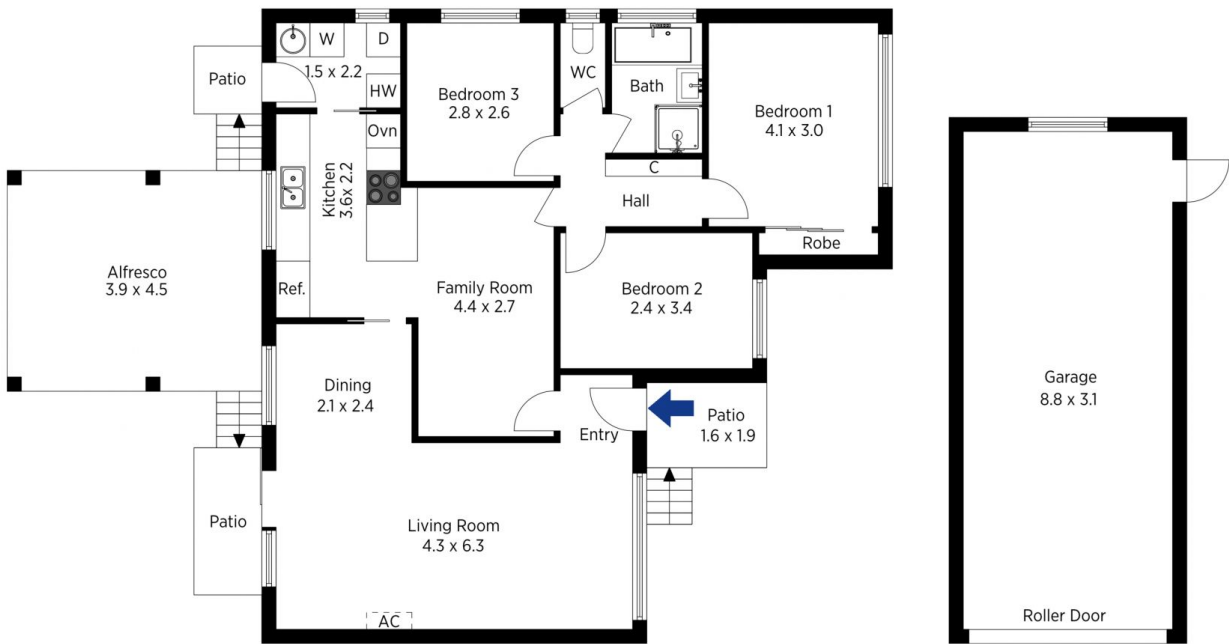
The floor plan is not to scale; measurements are indicative and in metres. All features included in this 3D plan are for inspiration purposes only. This is not an exact replica of the property or the position of exterior elements. Plans should not be relied on. Interested parties should make and rely on their own enquiries.

Produced by DIAKRIT

23 Fern Avenue, Hazelbrook

Chapman

Internal Area : 89 sqm approx.  
 External Area : 25 sqm approx.  
 Total Area : 114 sqm approx.



The floor plan is not to scale; measurements are indicative and in metres. Exterior elements are not in position. Plans should not be relied on. Interested parties should make and rely on their own enquiries.

Produced by DIAKRIT

23 Fern Avenue, Hazelbrook

Chapman