



60 Mount View Avenue Hazelbrook NSW

3 1

LOCATION - A well presented home just 2.1km from the Hazelbrook Village featuring a selection of café's, supermarket, butcher, green grocer, doctor and other specialty stores. Easy access to the Great Western Highway, approx. 2km to Hazelbrook train station, Hazelbrook Public School and Blue Mountains Steiner School. Surrounded by an abundance of local trails, bush walks and parks.

STYLE - Single level brick and tile home on a large 1157m2 block.

LAYOUT - Spacious living area leading through to dining, three bedrooms the main featuring split system A/C and built-in robe, an additional built-in to the second bedroom,

[For full version visit the website](https://www.chapmanrealestate.com.au/sale/nsw/blue-mountains-surrounds/hazelbrook/residential/house/7161380)

Type : House
Price : \$ 816,000
Land Size : 1157 sqm
View : <https://www.chapmanrealestate.com.au/sale/nsw/blue-mountains-surrounds/hazelbrook/residential/house/7161380>



Jonathan Crisp
02 4751 8266



Hayley Clifton
02 4782 5045

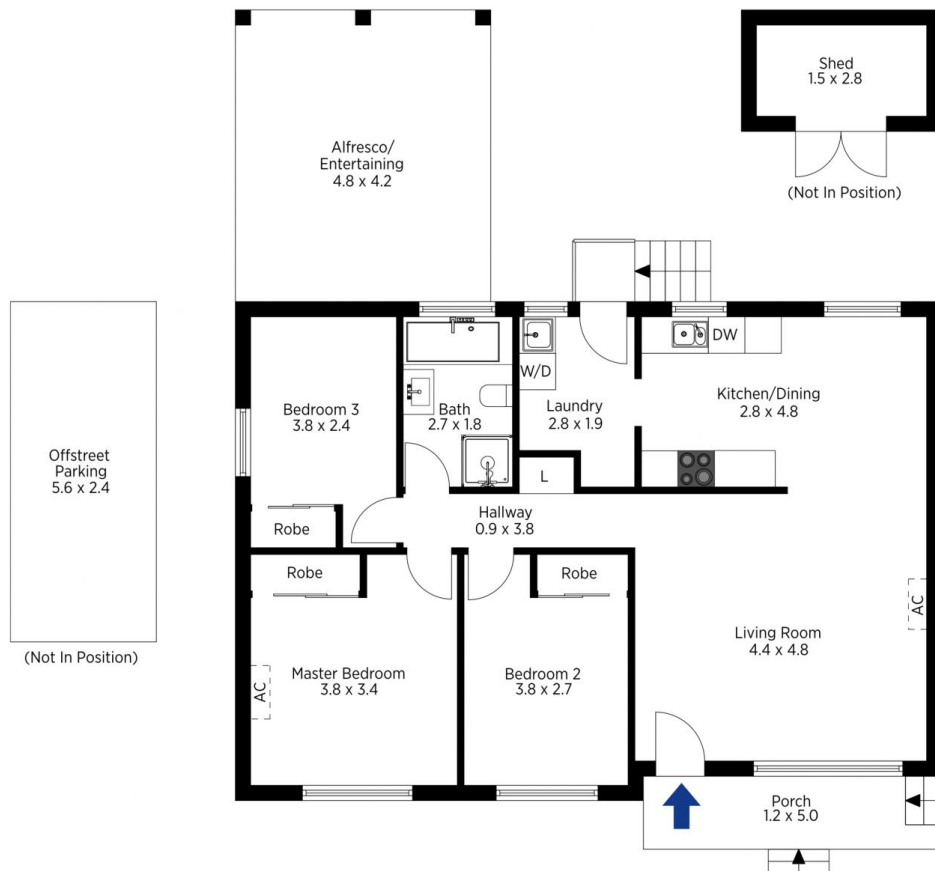


The floor plan is not to scale; measurements are indicative and in metres. All features included in this 3D plan are for inspiration purposes only. This is not an exact replica of the property or the position of exterior elements. Plans should not be relied on. Interested parties should make and rely on their own enquiries.

Produced by DIAKRIT

60 Mount View Avenue, Hazelbrook

Chapman



The floor plan is not to scale; measurements are indicative and in metres. Exterior elements are not in position. Plans should not be relied on. Interested parties should make and rely on their own enquiries.

Produced by DIAKRIT

60 Mount View Avenue, Hazelbrook

Chapman