



28 Valley Road Katoomba NSW

3 1 1

LOCATION - Set in private and leafy part of South Katoomba, convenient to Katoomba town centre, railway and transport hubs, all within 2kms. Nearby bush walks and lookouts offering spectacular views. Katoomba Aquatic Centre within 600 metres.

STYLE - High set, single level brick and tile bungalow surrounded by an established cottage garden on approximately 1,045m².

LAYOUT- Extremely comfortable 3 bedroom home, with sunlit lounge and dining, renovated bathroom and separate toilet.

FEATURES - Floating floors, carpet to bedrooms, beautiful natural light, along with a renovated bathroom, updated kitchen and lovely covered outdoor area, combine to make this home a place to relax and enjoy. Surrounded by

Type : House
Price : \$ 800,100
Land Size : 1045.79 sqm
View : <https://www.chapmanrealestate.com.au/sale/nsw/blue-mountains-surrounds/katoomba/residential/house/7161378>



James Simadas
02 4782 5045



Hayley Clifton
02 4782 5045

[For full version visit the website](#)

<https://www.chapmanrealestate.com.au>

28 VALLEY ROAD, KATOOMBA

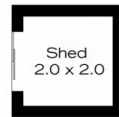


INTERNAL
83 m²
EXTERNAL
31 m²
TOTAL
114 m²

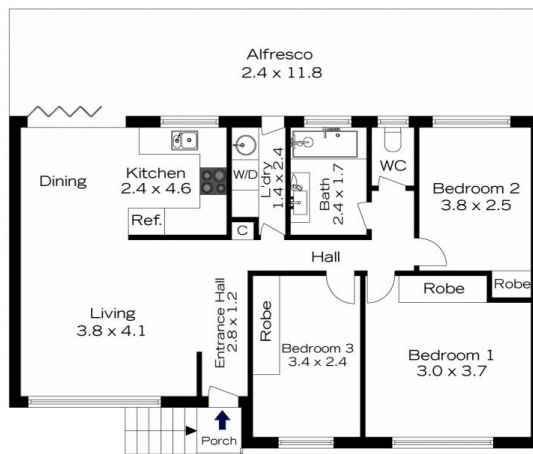


The floor plan is not to scale; measurements are indicative and in metres. All features included in this 3D plan are for inspiration purposes only. This is not an exact replica of the property or the position of exterior elements. Plans should not be relied on. Interested parties should make and rely on their own enquiries.

28 VALLEY ROAD, KATOOMBA



(Not In Position)



INTERNAL
83 m²
EXTERNAL
31 m²
TOTAL
114 m²



The floor plan is not to scale; measurements are indicative and in metres. Exterior elements are not in position. Plans should not be relied on. Interested parties should make and rely on their own enquiries.