



### 497 Hawkesbury Road Winmalee NSW

3 2 2

**LOCATION** - Set back from the road just 750m to Winmalee Shopping Village, a 150m stroll to bus stop and just 250m to Winmalee High School, and convenient to walks and parks.

**STYLE** - Tri level home of brick construction with tile roof, beautifully maintained by the original owners for 40 years.

**LAYOUT** - Two separate living spaces including formal lounges and dining room, plus downstairs living/rumpus, casual meals area off the kitchen, three full size bedrooms all with built ins plus study/home office or smaller 4th bedroom, ensuite bathroom and walk in closet to main bed, family bathroom and ensuite both updated.

**FEATURES** - Timber kitchen with integrated dishwasher, updated appliances and breakfast bar, ducted air conditioning and slow combustion fireplace, internal

**Type** : House  
**Price** : \$ 1,030,000  
**Land Size** : 1606 sqm  
**View** : <https://www.chapmanrealestate.com.au/sale/nsw/hawkesbury/winmalee/residential/house/7161373>



**Mark Poole**  
02 4751 8266

[For full version visit the website](https://www.chapmanrealestate.com.au)

# 497 HAWKESBURY ROAD, WINMALEE



Lower Ground Floor



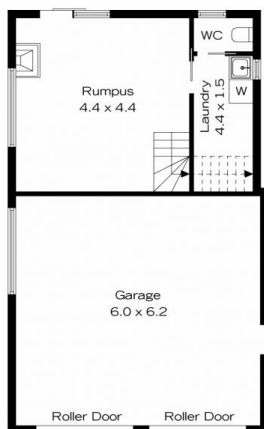
Ground Floor

**INTERNAL**  
180 m<sup>2</sup>  
**EXTERNAL**  
43 m<sup>2</sup>  
**TOTAL**  
223 m<sup>2</sup>

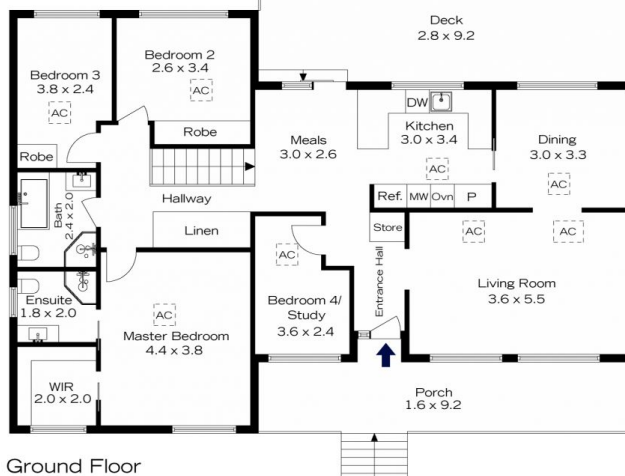


The floor plan is not to scale; measurements are indicative and in metres. All features included in this 3D plan are for inspiration purposes only. This is not an exact replica of the property or the position of exterior elements. Plans should not be relied on. Interested parties should make and rely on their own enquiries.

# 497 HAWKESBURY ROAD, WINMALEE



Lower Ground Floor



Ground Floor

**INTERNAL**  
180 m<sup>2</sup>  
**EXTERNAL**  
43 m<sup>2</sup>  
**TOTAL**  
223 m<sup>2</sup>



The floor plan is not to scale; measurements are indicative and in metres. Exterior elements are not in position. Plans should not be relied on. Interested parties should make and rely on their own enquiries.