



21 Hester Road LEURA NSW

4 2 2

LOCATION: Located in one of South Leura's most sought after streets. Set privately on a generous 800sqm battle-axe block, this brick residence has a beautiful bush outlook. Situated only 2.4km to the Leura station and the famous Leura Mall with all its shops, cafes and restaurants.

STYLE: 2 storey brick and tile home with flexible living plan. Set on a good-sized block with a private garden providing a great space to enjoy the bush aspect.

LAYOUT: Flexible floorplan offering a spacious interior. Multiple living areas to accommodate a growing family of all ages. Upstairs is the main kitchen with dining area leading to the living room with balcony, 3 bedrooms, and a bathroom with separate shower and bath. Downstairs has 1 bedroom with ensuite, living area and kitchen. This lower storey could easily be configured as a separate living

Type : House
Price : \$ 885,000
Land Size : 800 sqm
View : <https://www.chapmanrealestate.com.au/sale/nsw/blue-mountains-surrounds/leura/residential/house/7161370>



Hayley Clifton
02 4782 5045

[For full version visit the website](https://www.chapmanrealestate.com.au)

<https://www.chapmanrealestate.com.au>



First Floor



Ground Floor

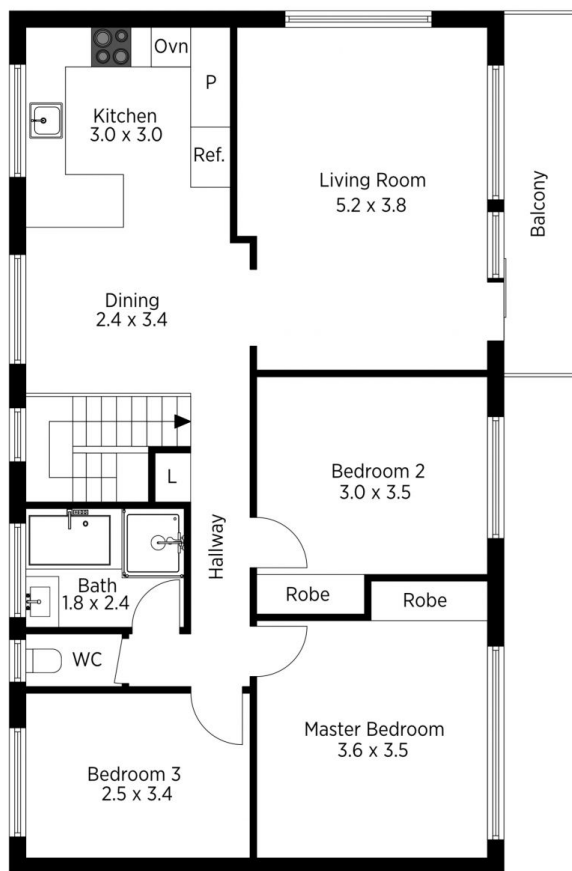


The floor plan is not to scale; measurements are indicative and in metres. All features included in this 3D plan are for inspiration purposes only. This is not an exact replica of the property or the position of exterior elements. Plans should not be relied on. Interested parties should make and rely on their own enquiries.

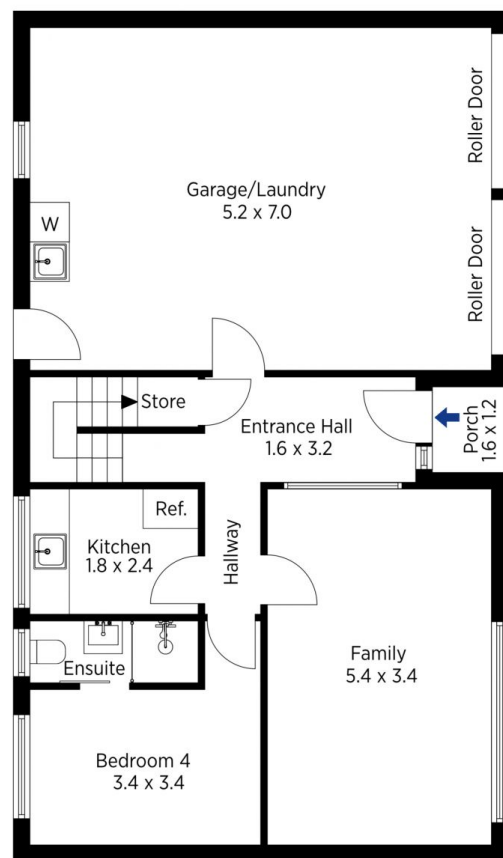
Produced by DIAKRIT

21 Hester Road, Leura

Chapman



First Floor



Ground Floor



The floor plan is not to scale; measurements are indicative and in metres. Exterior elements are not in position. Plans should not be relied on. Interested parties should make and rely on their own enquiries.

Produced by DIAKRIT

21 Hester Road, Leura

Chapman