



2 Clarinda Avenue Falconbridge NSW

4 🛏 2 🚿 2 🚗

LOCATION - Nestled in a private and completely tranquil location of Falconbridge with a glorious bush setting, conveniently positioned 200m to train and only 300m to bus and entrance to the Sir Henry Parkes Victory Track bush walk.

STYLE - Tri level family home with colourbond roof on generous 954.8m2 block with light and airy feel and a stunning rear outdoor entertaining area boasting incredible bush views.

LAYOUT - Spacious lounge with double door front verandah access, 4 bedrooms, 3 upstairs including master with ensuite (spa bath), built in robe, window seating and easterly views, plus 2 additional upstairs bedrooms with window seating boasting views, downstairs 4th double bedroom with large family bathroom & generous laundry.

Type : House
Price : \$ 880,000
Land Size : 954.8 sqm
View : <https://www.chapmanrealestate.com.au/sale/nsw/hawkesbury/falconbridge/residential/house/7161366>



Helen Harris
02 4751 8266



Chris Rayner
02 4739 6200

[For full version visit the website](https://www.chapmanrealestate.com.au)

<https://www.chapmanrealestate.com.au>

Internal Area : 162 sqm approx.
 External Area : 67 sqm approx.
 Total Area : 229 sqm approx.



Ground Floor



First Floor

The floor plan is not to scale; measurements are indicative and in metres. All features included in this 3D plan are for inspiration purposes only. This is not an exact replica of the property or the position of exterior elements. Plans should not be relied on. Interested parties should make and rely on their own enquiries.

Produced by DIAKRIT

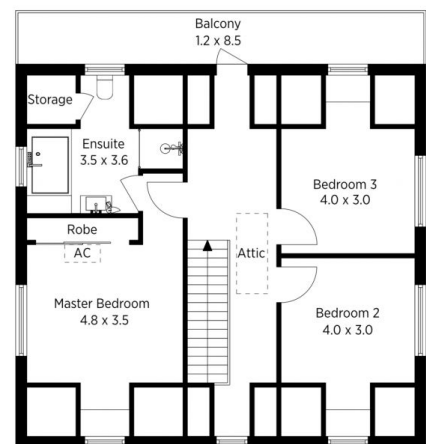
2 Clarinda Avenue, Falconbridge

Chapman

Internal Area : 162 sqm approx.
 External Area : 67 sqm approx.
 Total Area : 229 sqm approx.



Ground Floor



First Floor

The floor plan is not to scale; measurements are indicative and in metres. Exterior elements are not in position. Plans should not be relied on. Interested parties should make and rely on their own enquiries.

Produced by DIAKRIT

2 Clarinda Avenue, Falconbridge

Chapman