



33 Elizabeth Crescent Kingswood NSW

3 1 1

LOCATION - Conveniently located in the heart of Kingswood. Approximately 1.3km to Kingswood train station, 1km (approx.) to Nepean Hospital, just 900m from Kingswood South Public School, 1km from Kingswood High School, 1.8km from Western Sydney University and approximately 1.1km to two different local shops.

STYLE - Single level home of brick and cladding construction, flat metal roof on a flat block approx. 645sqm.

LAYOUT - Open flow living, sun filled kitchen and dining, three generous sized bedrooms, bathroom, separate lock up garage with a brand new roof, storage room attached.

FEATURES - Cosy kitchen with ample bench and storage space, timber floors, big, beautiful windows throughout letting in an abundance of natural light, split system air

Type : House
Price : \$ 707,000
Land Size : 645 sqm
View : <https://www.chapmanrealestate.com.au/sale/nsw/western-sydney/kingswood/residential/house/7161365>

[For full version visit the website](https://www.chapmanrealestate.com.au)

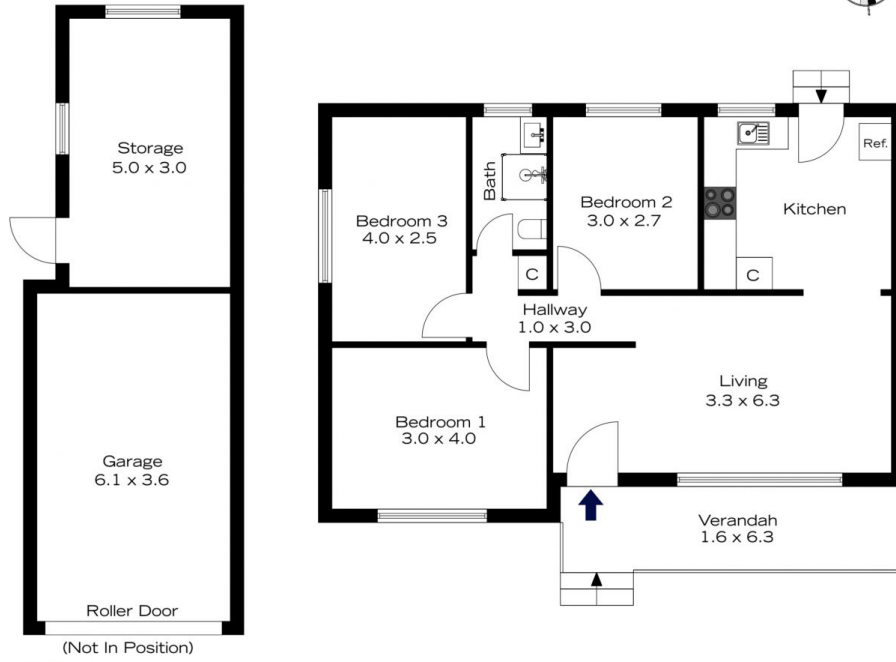


Sarah Watson
02 4739 4311



Rachel Power
02 4739 4311

33 ELIZABETH CRESCENT, KINGSWOOD



INTERNAL
81 m²

EXTERNAL
10 m²

TOTAL
91 m²

The floor plan is not to scale, measurements are indicative and in metres. Exterior elements are not in position. Plans should not be relied on. Interested parties should make and rely on their own enquiries.



33 ELIZABETH CRESCENT, KINGSWOOD



INTERNAL
81 m²

EXTERNAL
10 m²

TOTAL
91 m²

The floor plan is not to scale, measurements are indicative and in metres. All features included in this 3D plan are for inspiration purposes only. This is not an exact replica of the property or the position of exterior elements. Plans should not be relied on. Interested parties should make and rely on their own enquiries.

