



## 12-14 Davidson Road Leura NSW

4 3 2

**LOCATION** - Quiet, peaceful, sunny, and perfectly positioned to enjoy the Blue Mountains National Park offering extensive bush walks, wonderful vistas and a tranquil lifestyle, yet only 2.6km to Leura village.

**STYLE** - Gorgeous single level timber residence with colorbond roof and breezy verandas set on a level 1,810m<sup>2</sup> (approx) bush block with space to move.

**LAYOUT**- A bright and open living, kitchen and dining, complimented by a second living room, 4 bedrooms, 3 bathrooms, designer laundry and 2 car lock up garage.

**FEATURES** - Rarely does a property present the complete package, with a combination of a cosy mountain style, spacious and modern interiors, native gardens and privacy. Polished timber floors, central gas heating, feature stone fireplace, ceiling fans, raked ceilings, skylights and veranda

**Type** : House  
**Price** : \$ 1,370,000  
**Land Size** : 1808 sqm  
**View** : <https://www.chapmanrealestate.com.au/sale/nsw/blue-mountains-surrounds/leura/residential/house/7161364>



**James Simadas**  
02 4782 5045



**Hayley Clifton**  
02 4782 5045

[For full version visit the website](https://www.chapmanrealestate.com.au)

<https://www.chapmanrealestate.com.au>



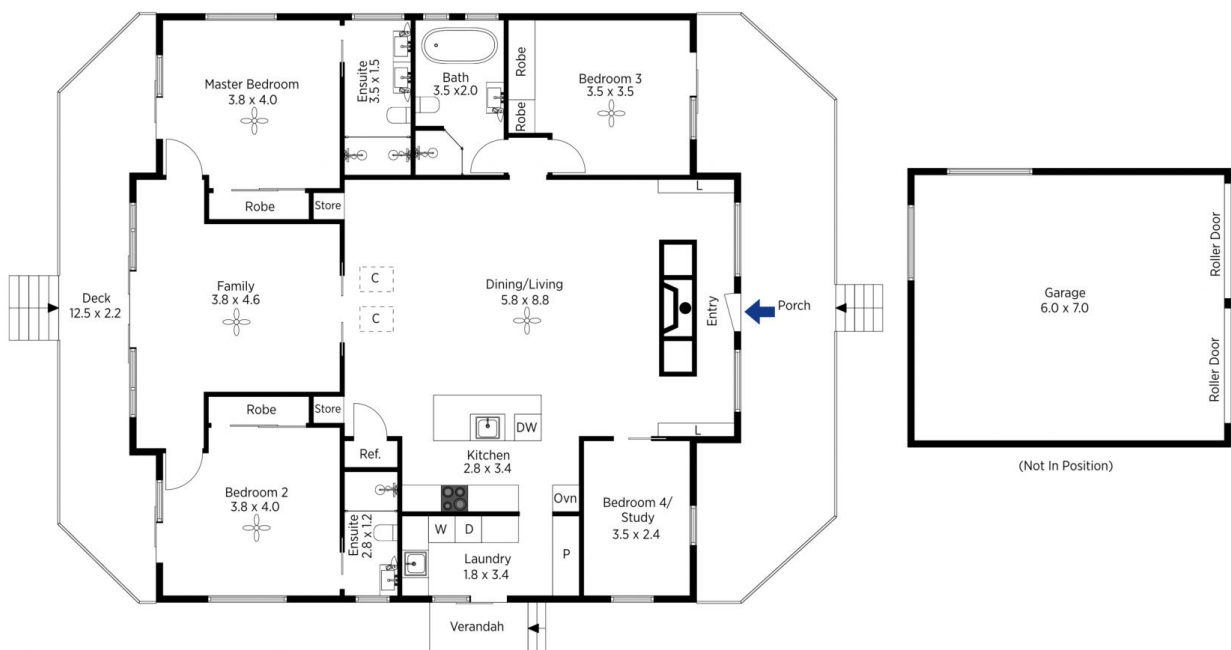


The floor plan is not to scale; measurements are indicative and in metres. All features included in this 3D plan are for inspiration purposes only. This is not an exact replica of the property or the position of exterior elements. Plans should not be relied on. Interested parties should make and rely on their own enquiries.

Produced by DIAKRIT

12-14 Davidson Road, Leura

Chapman



The floor plan is not to scale; measurements are indicative and in metres. Exterior elements are not in position. Plans should not be relied on. Interested parties should make and rely on their own enquiries.

Produced by DIAKRIT

12-14 Davidson Road, Leura

Chapman