



67-68/100 The Spires, Leura Mall Leura NSW

2 2 1

LOCATION- Popular and convenient location within a short stroll to Leura Village boutique shopping, local Woolworths supermarket, cafes, rail, bus, park & school.

STYLE - Ultra modern ground floor apartment in secure building. High end finishes and flexible floorplan with dual key which offers tremendous appeal as a comfortable home or great investment.

LAYOUT- Generous proportions offering 2 bedrooms and 2 bathrooms. Modern kitchen, living/dining and 2 balconies. Good storage. Internal Laundry.

FEATURES - Spacious light filled apartment with a flexible layout, offering dual key access if required, to use as 1 bedroom apartment and 1 bedroom studio, or as currently tenanted 2 bedroom 2 bathroom apartment. Split system air conditioning, Kitchen includes glass cooktop, range

Type : Unit
Price : \$ 540,000
View : <https://www.chapmanrealestate.com.au/sale/nsw/blue-mountains-surrounds/leura/residential/unit/7161350>



Hayley Clifton
02 4782 5045



James Simadas
02 4782 5045

[For full version visit the website](https://www.chapmanrealestate.com.au)

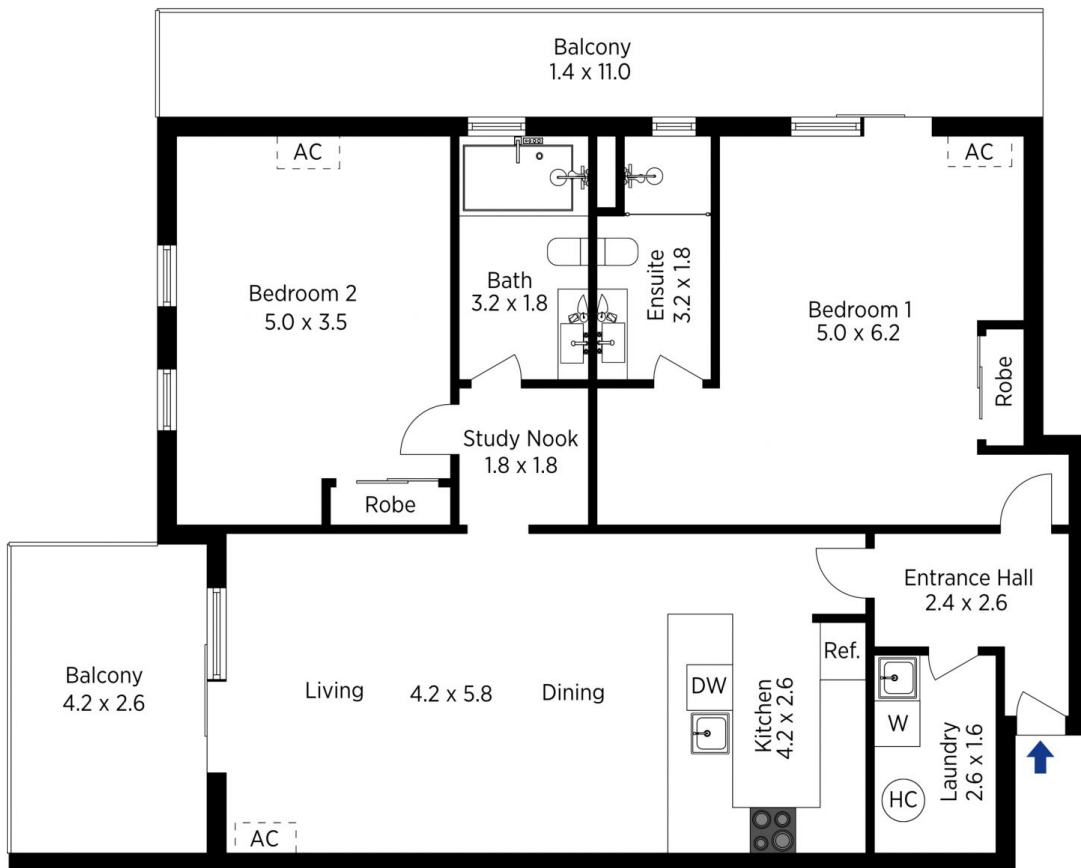


The floor plan is not to scale; measurements are indicative and in metres. All features included in this 3D plan are for inspiration purposes only. This is not an exact replica of the property or the position of exterior elements. Plans should not be relied on. Interested parties should make and rely on their own enquiries.

Produced by DIAKRIT

67-68/100 The Spires, Leura Mall, Leura

Chapman



The floor plan is not to scale; measurements are indicative and in metres. Exterior elements are not in position. Plans should not be relied on. Interested parties should make and rely on their own enquiries.

Produced by DIAKRIT

67-68/100 The Spires, Leura Mall, Leura

Chapman