



2 Taronga Way Faulconbridge NSW

3 2 4

LOCATION - Privately set in blue ribbon location with easy access to highway, walk to schools and bus, close to bush walks and bike tracks.

STYLE - Mainly single level rendered brick home with tile roof set on a 2038m2 block with stunning valley views.

LAYOUT - Two generous living areas, formal lounge and separate family/dining area, 3 bedrooms all with built in robes and fans, master with ensuite and walk-in robe, laundry and outdoor undercover entertaining area.

FEATURES - Contemporary kitchen, tile splash back, stainless steel appliances, stunning cabinetry, polished timber floors, split system air conditioning, feature gas

[For full version visit the website](https://www.chapmanrealestate.com.au)

Type : House
Price : \$ 755,000
Land Size : 2038 sqm
View : <https://www.chapmanrealestate.com.au/sale/nsw/hawkesbury/faulconbridge/residential/house/7161349>



Helen Harris
02 4751 8266



Claudia Hayes
02 4751 8266

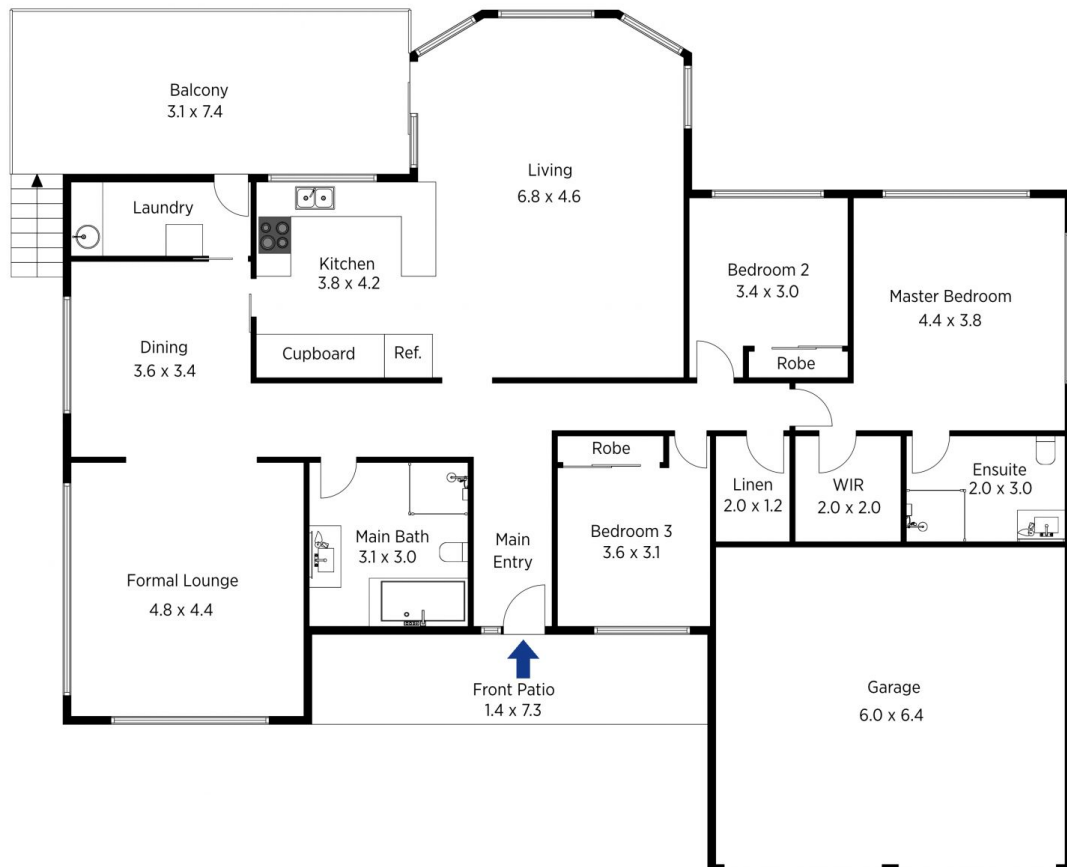


The floor plan is not to scale; measurements are indicative and in metres. All features included in this 3D plan are for inspiration purposes only. This is not an exact replica of the property or the position of exterior elements. Plans should not be relied on. Interested parties should make and rely on their own enquiries.

Produced by DIAKRIT

2 Taronga Way, Faulconbridge

Chapman



The floor plan is not to scale; measurements are indicative and in metres. Exterior elements are not in position. Plans should not be relied on. Interested parties should make and rely on their own enquiries.

Produced by DIAKRIT

2 Taronga Way, Faulconbridge

Chapman