



11 Lester Avenue Hazelbrook NSW

3 2 1

LOCATION: Proudly set in the quiet street just down from Gloria Park, 240m to bus, 900m to Hazelbrook train station, 700m to Hazelbrook town centre, also within close proximity to schools, doctors, Hazelbrook bowling club, and bush walks.

STYLE: Single level clad cottage offering charming and original features combined with stylish finishes offering a true Mountains property. Nestled on a 942m2 block with established gardens and a private rear deck overlooking the studio and yard.

LAYOUT: Three light filled bedrooms, master with ensuite. Generous main bathroom with classic features, a central country style kitchen with free standing cooker, open plan

Type : House
Price : \$ 950,000
Land Size : 942.2 sqm
View : <https://www.chapmanrealestate.com.au/sale/nsw/blue-mountains-surrounds/hazelbrook/residential/house/7161344>



Jonathan Crisp
02 4751 8266

[For full version visit the website](https://www.chapmanrealestate.com.au)

<https://www.chapmanrealestate.com.au>

11 LESTER AVENUE, HAZELBROOK



INTERNAL
97 m²

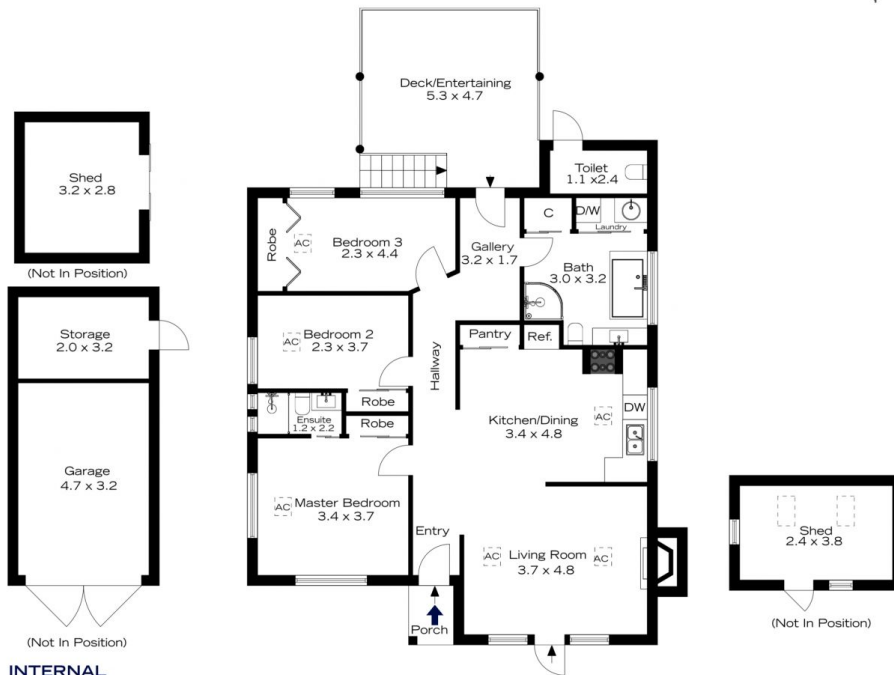
EXTERNAL
19 m²

TOTAL
116 m²



The floor plan is not to scale; measurements are indicative and in metres. All features included in this 3D plan are for inspiration purposes only. This is not an exact replica of the property or the position of exterior elements. Plans should not be relied on. Interested parties should make and rely on their own enquiries.

11 LESTER AVENUE, HAZELBROOK



INTERNAL
97 m²

EXTERNAL
19 m²

TOTAL
116 m²



The floor plan is not to scale; measurements are indicative and in metres. Exterior elements are not in position. Plans should not be relied on. Interested parties should make and rely on their own enquiries.