



1/4 Short Street Springwood NSW

3 2 1

LOCATION - Highly sought after Springwood Village location, walk to village for all its conveniences.

STYLE - Single level cottage built circa 2017, low maintenance landscaped 459m2 block.

LAYOUT - 2 separate & generous living rooms, 3 double sized bedrooms all with built-ins, main with walk-in robe and ensuite, open plan kitchen & dining flows to alfresco.

FEATURES - As new throughout, large French provincial style kitchen with island breakfast bar, 900mm oven, high ceilings throughout, ducted air conditioning, NBN fibre to house, longer single lock-up garage with internal access.

Disclaimer:

All information contained herein is gathered from sources we believe to be reliable. However, we cannot guarantee

[For full version visit the website](https://www.chapmanrealestate.com.au)

Type : House
Price : \$ 1,130,000
Land Size : 459 sqm
View : <https://www.chapmanrealestate.com.au/sale/nsw/hawkesbury/springwood/residential/house/7161331>



Jonathan Crisp
02 4751 8266

Internal Area : 164 sqm approx.
 External Area : 24 sqm approx.
 Total Area : 188 sqm approx.



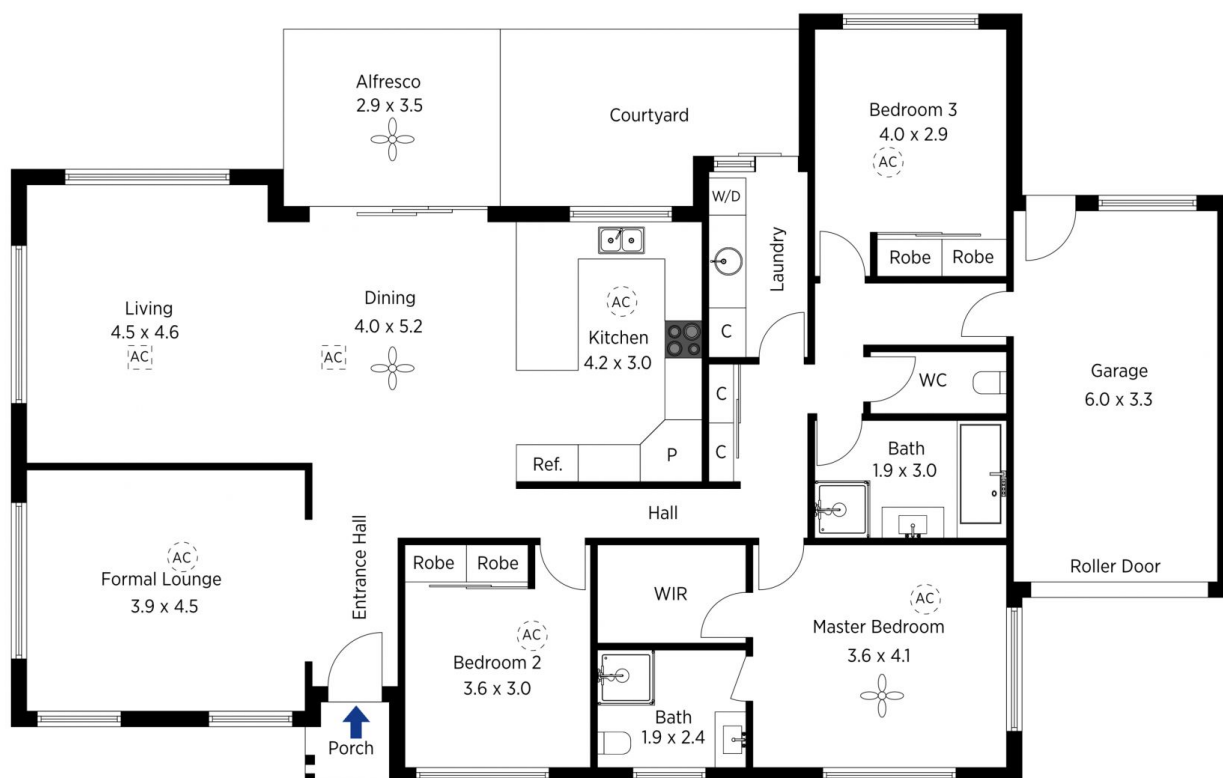
The floor plan is not to scale; measurements are indicative and in metres. All features included in this 3D plan are for inspiration purposes only. This is not an exact replica of the property or the position of exterior elements. Plans should not be relied on. Interested parties should make and rely on their own enquiries.

Produced by DIAKRIT

1/4 Short Street, Springwood

Chapman

Internal Area : 164 sqm approx.
 External Area : 24 sqm approx.
 Total Area : 188 sqm approx.



The floor plan is not to scale; measurements are indicative and in metres. Exterior elements are not in position. Plans should not be relied on. Interested parties should make and rely on their own enquiries.

Produced by DIAKRIT

1/4 Short Street, Springwood

Chapman