



47 Surveyor Abbot Drive Glenbrook NSW

6 3 2

LOCATION - Much loved prestigious family friendly location within the elegant grandiose Mt Sion Estate - quality homes, wide streets, under ground power, manicured gardens, house proud owners, etc. Short walk to glorious bush walks and bike tracks.

STYLE - Commanding and majestic 2 storey home with generous rooms throughout, bush outlook, easy care grounds and sparkling in-ground swimming pool with azure water.

LAYOUT - 4 living rooms, 6 bedrooms plus office (or 7th bedroom) and study. 3 bathrooms.

FEATURES - Large open plan chefs kitchen, ducted reverse cycle air conditioning, polished timber floorboards, gorgeous outlook, rumpus with raked ceilings, incredible feel, entertaining area, garden shed, double lock up garage

Type : House
Price : \$ 1,520,000
Land Size : 1007 sqm
View : <https://www.chapmanrealestate.com.au/sale/nsw/blue-mountains-surrounds/glenbrook/residential/house/7161327>



Milton Player
02 4739 4311



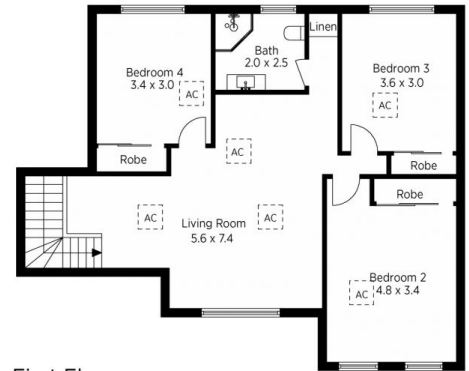
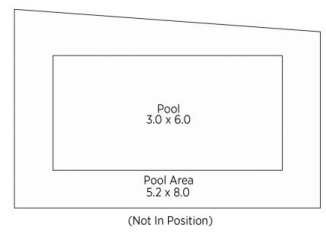
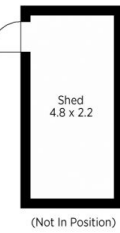
Glen Power
02 4739 4311

[For full version visit the website](https://www.chapmanrealestate.com.au)

<https://www.chapmanrealestate.com.au>



Ground Floor



First Floor

The floor plan is not to scale; measurements are indicative and in metres. Exterior elements are not in position. Plans should not be relied on. Interested parties should make and rely on their own enquiries.

Produced by DIAKRIT

47 Surveyor Abbot Drive, Glenbrook

Chapman



Ground Floor



First Floor

The floor plan is not to scale; measurements are indicative and in metres. All features included in this 3D plan are for inspiration purposes only. This is not an exact replica of the property or the position of exterior elements. Plans should not be relied on. Interested parties should make and rely on their own enquiries.

Produced by DIAKRIT

47 Surveyor Abbot Drive, Glenbrook

Chapman