



### 105 Cliff Drive Katoomba NSW

3 2 1

**LOCATION** - Positioned in one of Katoomba's most sought after streets - Cliff Drive, moments away from panorama breath taking views. With 300m (approx.) to Scenic World and a short 5 minute (approx.) drive into Katoomba CBD. Complete privacy yet still conveniently close to town.

**STYLE** - Approx. 10 year old clad cottage, built on an (approx.) 1,031m<sup>2</sup> block. This home is well presented and looked after with a spacious open plan living with three bedrooms.

**LAYOUT** - A desirable three bedroom home with open plan kitchen with spacious combined living and dining areas, perfect for the family.

**Type** : House  
**Price** : \$ 635,000  
**Land Size** : 1031 sqm  
**View** : <https://www.chapmanrealestate.com.au/sale/nsw/blue-mountains-surrounds/katoomba/residential/house/7161324>



**Jonathan Crisp**  
02 4751 8266

[For full version visit the website](https://www.chapmanrealestate.com.au)

<https://www.chapmanrealestate.com.au>



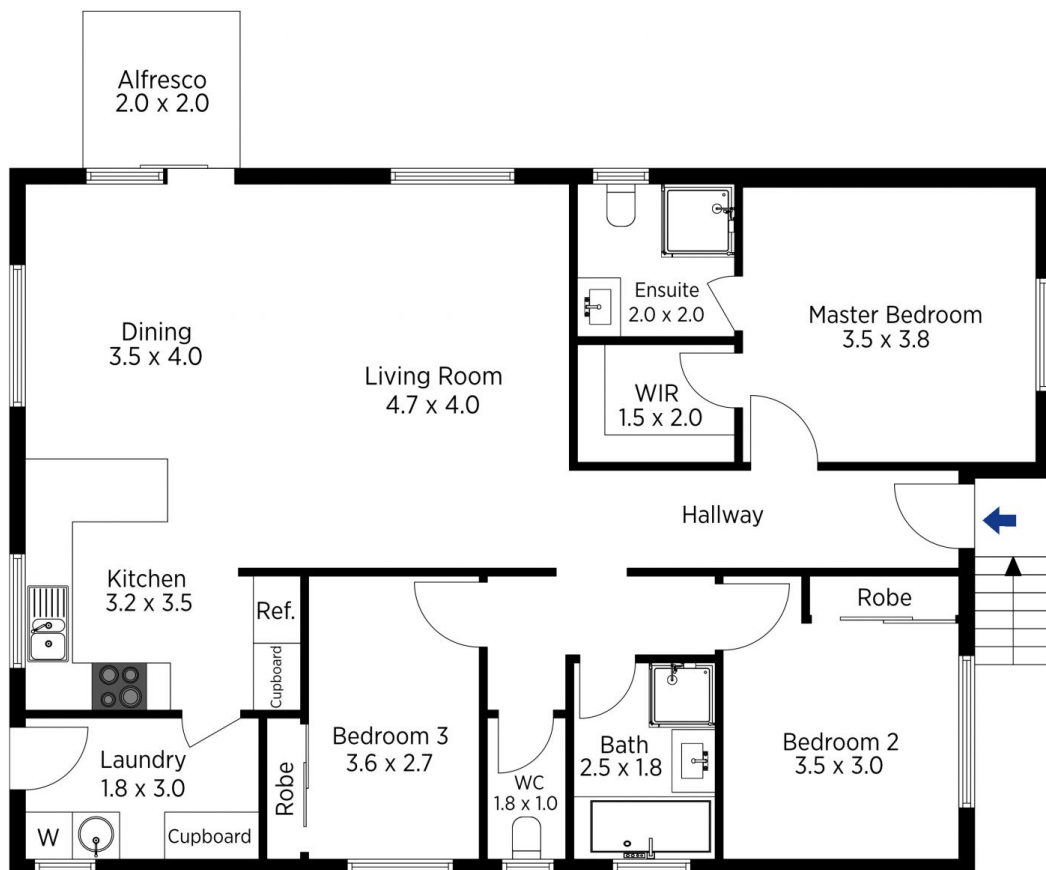


The floor plan is not to scale; measurements are indicative and in metres. All features included in this 3D plan are for inspiration purposes only. This is not an exact replica of the property or the position of exterior elements. Plans should not be relied on. Interested parties should make and rely on their own enquiries.

Produced by DIAKRIT

105 Cliff Drive, Katoomba

Chapman



The floor plan is not to scale; measurements are indicative and in metres. Exterior elements are not in position. Plans should not be relied on. Interested parties should make and rely on their own enquiries.

Produced by DIAKRIT

105 Cliff Drive, Katoomba

Chapman