



### 36 Grahame Street Blaxland NSW

3 1

**LOCATION:** Conveniently positioned approximately a 3 minute drive to local shops, schools, parks, bushwalks, tennis courts, bus & rail services.

**STYLE:** Neat & tidy clad home with tile roof, nestled on a 556m2 block.

**LAYOUT:** This single level property boasts light filled interiors, three bedrooms with a separate lounge & dining room, family bathroom, internal laundry.

**FEATURES:** Sun-drenched kitchen, split system air conditioning, polished timber floorboards in main living areas, carpet in bedrooms, secure fully fenced rear yard, shed, ample off street parking.

**Disclaimer:**

All information contained herein is gathered from sources

[For full version visit the website](https://www.chapmanrealestate.com.au)

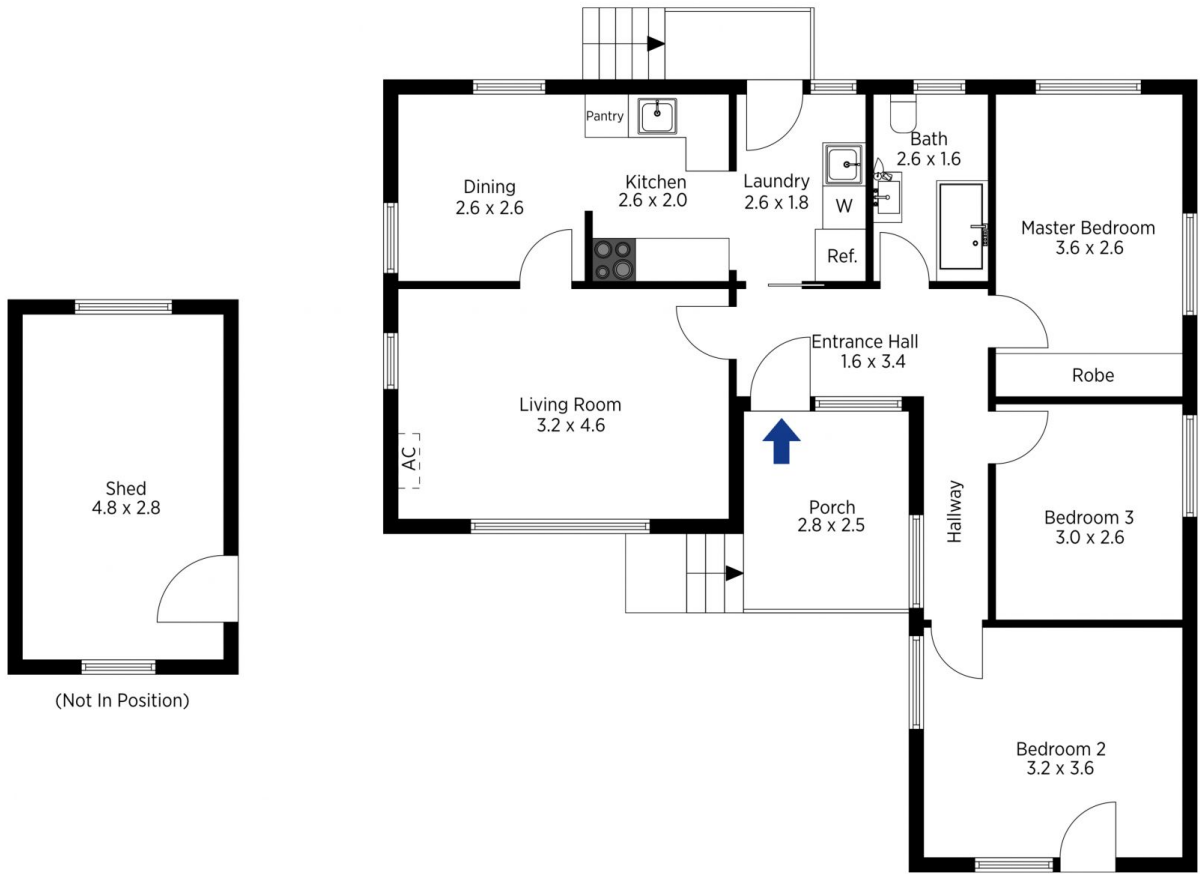
**Type** : House  
**Price** : \$ 765,000  
**Land Size** : 556 sqm  
**View** : <https://www.chapmanrealestate.com.au/sale/nsw/blue-mountains-surrounds/blaxland/residential/house/7161323>



**Sarah Watson**  
02 4739 4311



**Sharon Clark**  
02 4739 6200



The floor plan is not to scale; measurements are indicative and in metres. Exterior elements are not in position. Plans should not be relied on. Interested parties should make and rely on their own enquiries.

Produced by DIAKRIT

36 Grahame Street, Blaxland

Chapman



The floor plan is not to scale; measurements are indicative and in metres. All features included in this 3D plan are for inspiration purposes only. This is not an exact replica of the property or the position of exterior elements. Plans should not be relied on. Interested parties should make and rely on their own enquiries.

Produced by DIAKRIT

36 Grahame Street, Blaxland

Chapman