

69 Emu Plains Road Mount Riverview NSW

4 🛏 2 🚿 2 🚗

LOCATION - Nestled amongst the trees in a quiet part of Mount Riverview, backing bush with gorgeous green leafy outlook.

STYLE - Tri level home of brick construction with tile roof, extremely practical layout for the family.

LAYOUT - Formal lounge, large separate 2nd living, four double bedrooms, all with built ins (main with walk in robe), home office and additional study nook, both main bathroom and ensuite are renovated, internal laundry.

FEATURES - Updated kitchen with dishwasher, stone benches and gas cooktop, slow combustion timber fireplace, reverse cycle 3 zone ducted AC, soaring raked ceilings with exposed timber beams, gas bayonets, heated towel rail, separate 3rd toilet, new gutters with gutter guard, multiple timber decks and enormous undercover

Type : House
Price : \$ 770,000
Land Size : 1208 sqm
View : <https://www.chapmanrealestate.com.au/sale/nsw/hawkesbury/mount-riverview/residential/house/7161313>



Mark Poole
02 4751 8266

[For full version visit the website](https://www.chapmanrealestate.com.au)

<https://www.chapmanrealestate.com.au>



1st Floor



Ground Floor

The floor plan is not to scale; measurements are indicative and in metres. All features included in this 3D plan are for inspiration purposes only. This is not an exact replica of the property or the position of exterior elements. Plans should not be relied on. Interested parties should make and rely on their own enquiries.

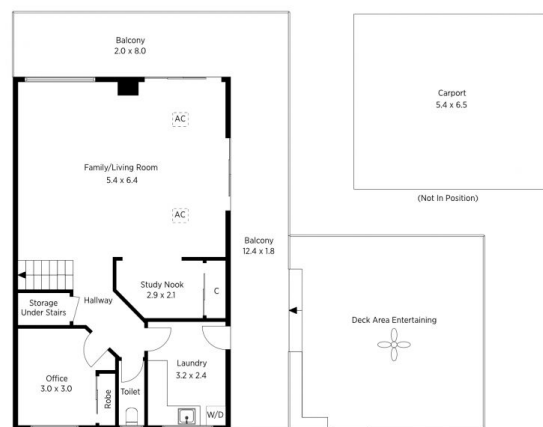
Produced by DIAKRIT

69 Emu Plains Road, Mount Riverview

Chapman



1st Floor



Ground Floor

The floor plan is not to scale; measurements are indicative and in metres. Exterior elements are not in position. Plans should not be relied on. Interested parties should make and rely on their own enquiries.

Produced by DIAKRIT

69 Emu Plains Road, Mount Riverview

Chapman