



49 Grose Road Faulconbridge NSW

4 2 2

LOCATION - R2 zoned and sitting on a large block of approx 1401m2 with an impressive street frontage of close to 33m, within 1km of local shops, 400m to both the primary and high school, convenient to local sports & aquatic centre, Norman Lindsay Gallery and Buttenshaw Park, with a bus stop at the door.

STYLE - Two storey split level clad home on brick foundations.

LAYOUT - Large open sun filled living & dining area with floorboards, 3 beds with carpet (needs replacing), master with built in robes, original main bathroom, separate toilet, laundry and downstairs office area.

FEATURES - Galley style kitchen with stone benches, timber cabinetry and 900m Smeg oven with 6 burner gas cook top and glass splash back, high ceilings, multiple

Type : House
Price : \$ 580,000
Land Size : 1401 sqm
View : <https://www.chapmanrealestate.com.au/sale/nsw/hawkesbury/faulconbridge/residential/house/7161308>

[For full version visit the website](https://www.chapmanrealestate.com.au)



Helen Harris
02 4751 8266

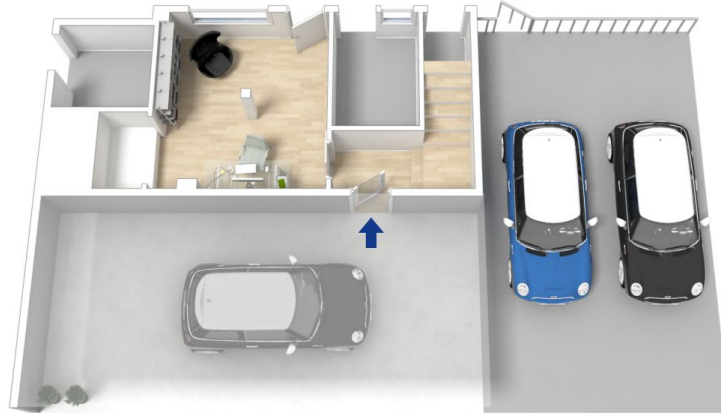


Mark Poole
02 4751 8266

<https://www.chapmanrealestate.com.au>



First Floor



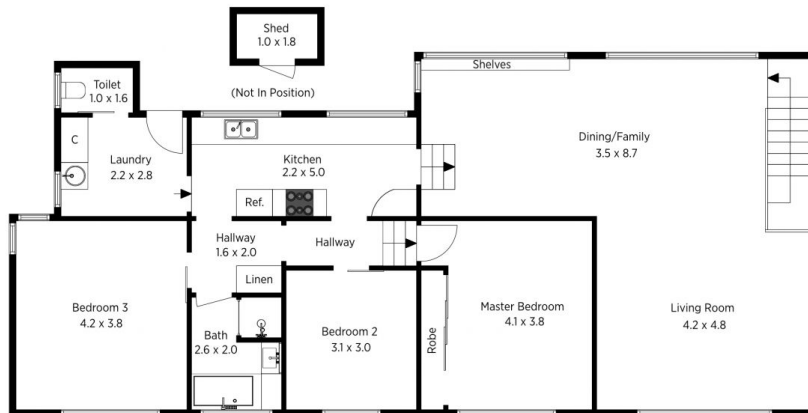
Ground Floor

The floor plan is not to scale; measurements are indicative and in metres. All features included in this 3D plan are for inspiration purposes only. This is not an exact replica of the property or the position of exterior elements. Plans should not be relied on. Interested parties should make and rely on their own enquiries.

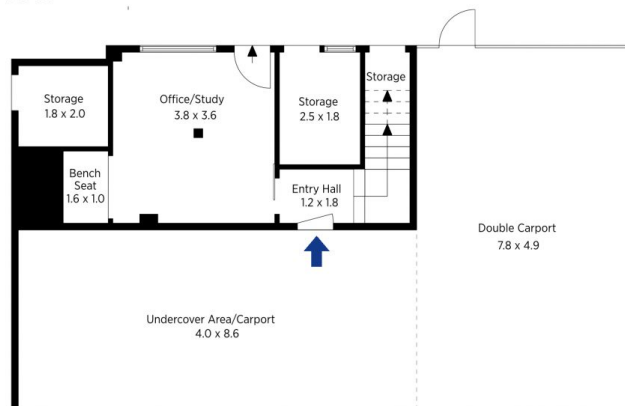
Produced by DIAKRIT

49 Grose Road, Faulconbridge

Chapman



First Floor



Ground Floor

The floor plan is not to scale; measurements are indicative and in metres. Exterior elements are not in position. Plans should not be relied on. Interested parties should make and rely on their own enquiries.

Produced by DIAKRIT

49 Grose Road, Faulconbridge

Chapman