



4 Tallowood Gardens Blaxland NSW

3 2 2

LOCATION- Perfectly positioned in a very popular and extremely convenient location. East Blaxland shops, Day care, Post office, Pharmacy, Coffee, Butcher, convenience store, parks, East Blaxland Public School, and a range of other boutique shops are all within a short 500m approx. walk.

STYLE- Very well presented and offering single level living, brick veneer with Colourbond roof and a contemporary feel.

LAYOUT- An easy flow floorplan encompasses 3 good size bedrooms, plus a separate dining area (potential 4th bedroom). There is a small family room off the kitchen and a nice size lounge which opens perfectly to the rear yard.

Type : House
Price : \$ 1,142,500
Land Size : 935 sqm
View : <https://www.chapmanrealestate.com.au/sale/nsw/blue-mountains-surrounds/blaxland/residential/house/7161301>



Chris Rayner
02 4739 6200

[For full version visit the website](https://www.chapmanrealestate.com.au)

<https://www.chapmanrealestate.com.au>

4 TALLOWOOD GARDENS, BLAXLAND



INTERNAL
162 m²

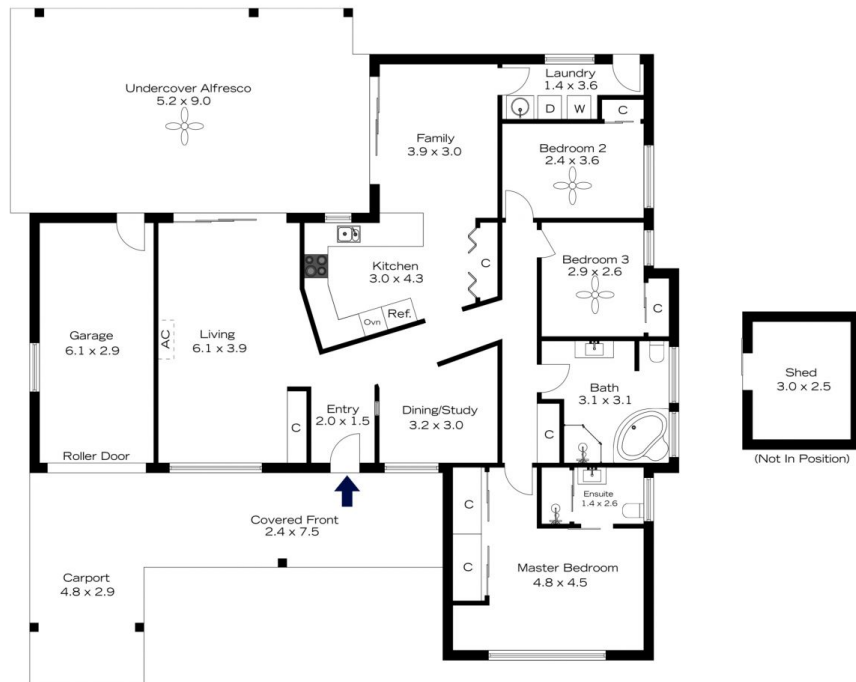
EXTERNAL
81 m²

TOTAL
243 m²



The floor plan is not to scale; measurements are indicative and in metres. All features included in this 3D plan are for inspiration purposes only. This is not an exact replica of the property or the position of exterior elements. Plans should not be relied on. Interested parties should make and rely on their own enquiries.

4 TALLOWOOD GARDENS, BLAXLAND



INTERNAL
162 m²

EXTERNAL
81 m²

TOTAL
243 m²



The floor plan is not to scale; measurements are indicative and in metres. Exterior elements are not in position. Plans should not be relied on. Interested parties should make and rely on their own enquiries.