



3 Reid Circle Winmalee NSW

5 🛏 2 🚿 2 🚗

LOCATION - Situated in a quiet cul-de-sac in Winmalee on a large useable block of approx. 1220sqm, within close and convenient proximity to corner store, schools, shopping and medical centre, community sporting oval and tennis courts.

STYLE - Streamline, modern deco style family home with the kitchen being the centrepiece of the home. Awash with natural light and brilliantly designed for seamless indoor/outdoor living throughout the whole year.

LAYOUT - Striking open plan kitchen, living and dining enjoying elevated distant city views, 2nd living area, 5 bedrooms with built in robes, one of which is a separate hotel style master retreat downstairs with ensuite and private access to covered patio and lush backyard, 2 bathrooms over all.

FEATURES - New kitchen with Caesarstone counter tops,

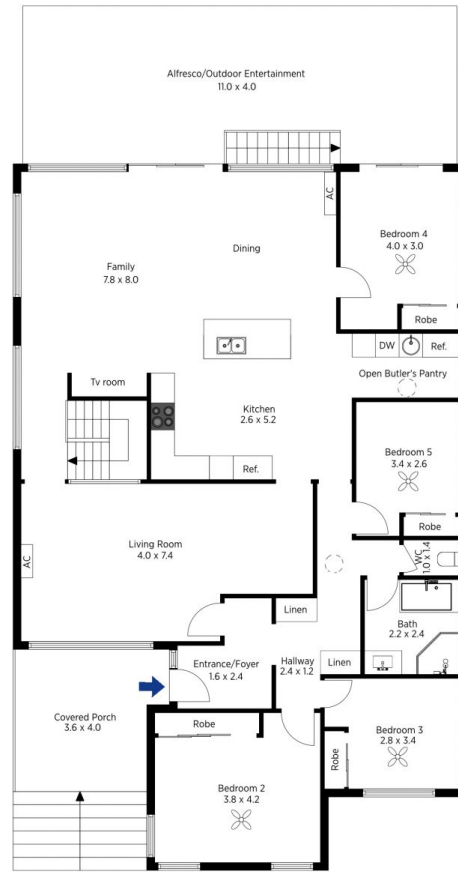
Type : House
Price : \$ 810,000
Land Size : 1220 sqm
View : <https://www.chapmanrealestate.com.au/sale/nsw/hawkesbury/winmalee/residential/house/7161285>



Milton Player
02 4739 4311

[For full version visit the website](https://www.chapmanrealestate.com.au)

<https://www.chapmanrealestate.com.au>



The floor plan is not to scale; measurements are indicative and in metres. Exterior elements are not in position. Plans should not be relied on. Interested parties should make and rely on their own enquiries.

Produced by DIAKRIT

3 Reid Circlce, Winmalee

Chapman



The floor plan is not to scale; measurements are indicative and in metres. All features included in this 3D plan are for inspiration purposes only. This is not an exact replica of the property or the position of exterior elements. Plans should not be relied on. Interested parties should make and rely on their own enquiries.

Produced by DIAKRIT

3 Reid Circlce, Winmalee

Chapman