



6 Omega Avenue Lapstone NSW

4 🚗 2 🚗 2 🚗

LOCATION - In leafy Lapstone with nearby Lapstone Public School (1.5km), easy access to M4 Motorway and Glenbrook Village within 2.7 kms.

STYLE - Renovated and updated executive open plan home offering stunning city and horizon views to the east.

LAYOUT - 3 living areas, 4 bedrooms on main level (3 with built-in robes), stunning sun-lit bathroom and renovated kitchen with stone bench tops, dishwasher, ceramic cook top and wall oven. Separate entrance to the studio space with 2 rooms and bathroom.

FEATURES - Enjoy the beautiful vista and views from the full length rear deck overlooking the in-ground pool, or relax over breakfast on the side alfresco deck. Mod wood decks. heated in-ground pool, paved rear yard, established gardens, outdoor screen room, air-conditioning, floor to

Type : House
Price : \$ 917,543
Land Size : 734 sqm
View : <https://www.chapmanrealestate.com.au/sale/nsw/blue-mountains-surrounds/lapstone/residential/house/7161279>



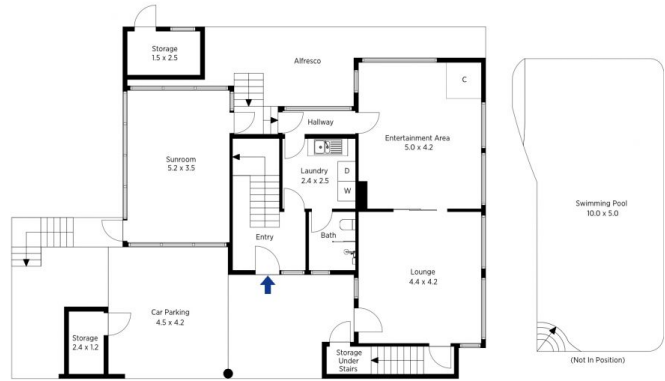
James Simadas
02 4782 5045

[For full version visit the website](https://www.chapmanrealestate.com.au)

<https://www.chapmanrealestate.com.au>



First Floor



Ground Floor

The floor plan is not to scale; measurements are indicative and in metres. Exterior elements are not in position. Plans should not be relied on. Interested parties should make and rely on their own enquiries.

Produced by DIAKRIT

6 Omega Avenue, Lapstone

Chapman



First Floor



Ground Floor

The floor plan is not to scale; measurements are indicative and in metres. All features included in this 3D plan are for inspiration purposes only. This is not an exact replica of the property or the position of exterior elements. Plans should not be relied on. Interested parties should make and rely on their own enquiries.

Produced by DIAKRIT

6 Omega Avenue, Lapstone

Chapman