



### 13 Murphy Street Blaxland NSW

3 1 1

**LOCATION** - You will find this fantastic property in the heart of the lower Blue Mountains, within walking distance of the Lapstone Hotel, shops, cafes and restaurants and in close proximity to Glenbrook Lagoon. The highway is only a moment away giving you quick and easy access to Penrith and the M4 Motorway, or head straight up the mountain for more attractions. There are schools and daycare centres within a few minutes drive from this lovely home too.

**STYLE** - This property has been maintained extremely well, and the bathroom and kitchen have both been given quality modern updates with plenty of life left in them. The main living area has polished wooden floors. Some simple cosmetic upgrades such as fresh paint, window fixtures

[For full version visit the website](https://www.chapmanrealestate.com.au)

**Type** : House  
**Price** : \$ 790,000  
**Land Size** : 553 sqm  
**View** : <https://www.chapmanrealestate.com.au/sale/nsw/blue-mountains-surrounds/blaxland/residential/house/7161277>



**Kate Spence**  
02 4739 6200



**Chris Rayner**  
02 4739 6200



Internal Area : 87 sqm approx.  
External Area : 12 sqm approx.  
Total Area : 99 sqm approx.



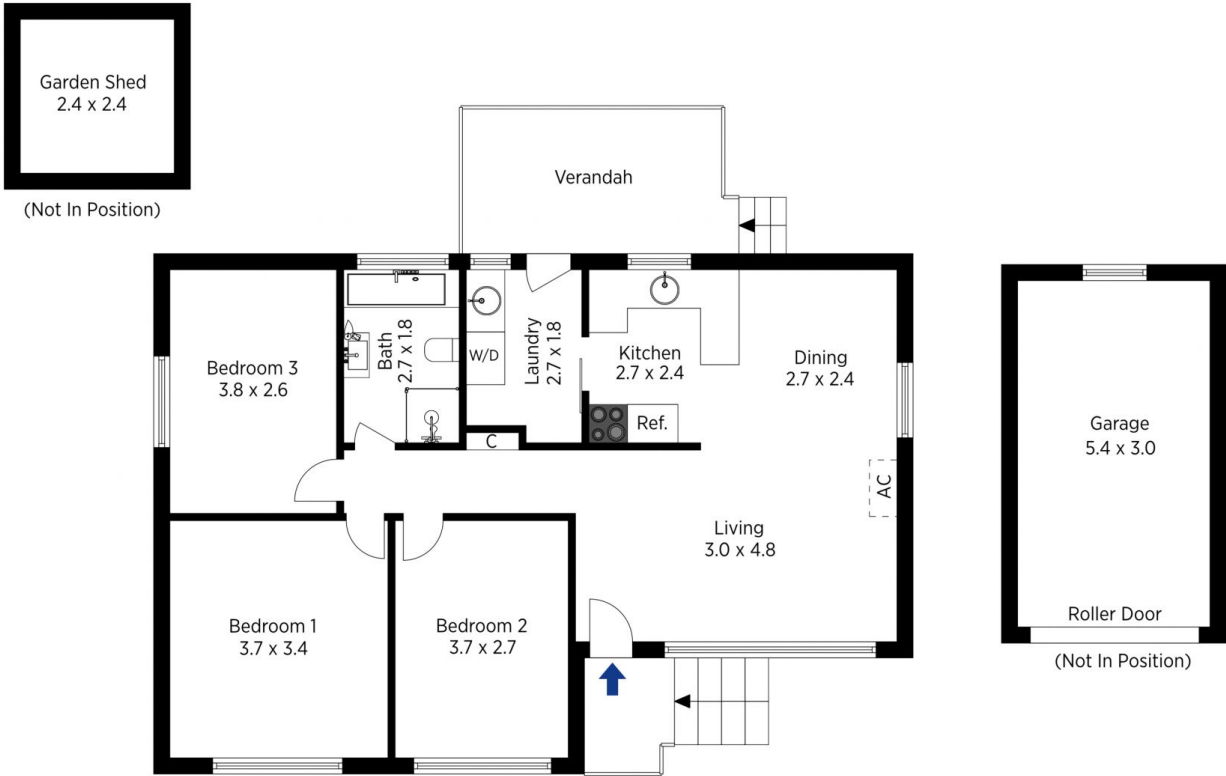
The floor plan is not to scale; measurements are indicative and in metres. All features included in this 3D plan are for inspiration purposes only. This is not an exact replica of the property or the position of exterior elements. Plans should not be relied on. Interested parties should make and rely on their own enquiries.

Produced by DIAKRIT

13 Murphy Street, Blaxland

Chapman

Internal Area : 87 sqm approx.  
External Area : 12 sqm approx.  
Total Area : 99 sqm approx.



The floor plan is not to scale; measurements are indicative and in metres. Exterior elements are not in position. Plans should not be relied on. Interested parties should make and rely on their own enquiries.

Produced by DIAKRIT

13 Murphy Street, Blaxland

Chapman