



### 39 Heather Road Winmalee NSW

3 2 2

**LOCATION** - Ideally situated within a 1km radius (approx.) of Winmalee Shopping Centre, medical centre, Summerhayes Park and tennis courts. Less than a 5 minute drive to nearby High Schools and Public Schools. Located on a large bush block of approx. 1,910sqm in a quiet cul-de-sac.

**STYLE** - Built mid 1970's this single level brick home has a lot to offer with great potential. Spacious and privately set on a wide block this is an ideal renovator.

**LAYOUT** - Multiple living areas, 3 bedrooms with built in robes (ensuite to master), open kitchen and dining, sunroom overlooking the bush surrounds, oversized utility room set at the rear of the garage, 2 bathrooms overall.

**FEATURES** - Galley style timber kitchen, air conditioner, fireplace, natural gas, gas bayonets, polished timber floors,

**Type** : House  
**Price** : \$ 610,000  
**Land Size** : 1936 sqm  
**View** : <https://www.chapmanrealestate.com.au/sale/nsw/hawkesbury/winmalee/residential/house/7161275>



**Milton Player**  
02 4739 4311

[For full version visit the website](https://www.chapmanrealestate.com.au)

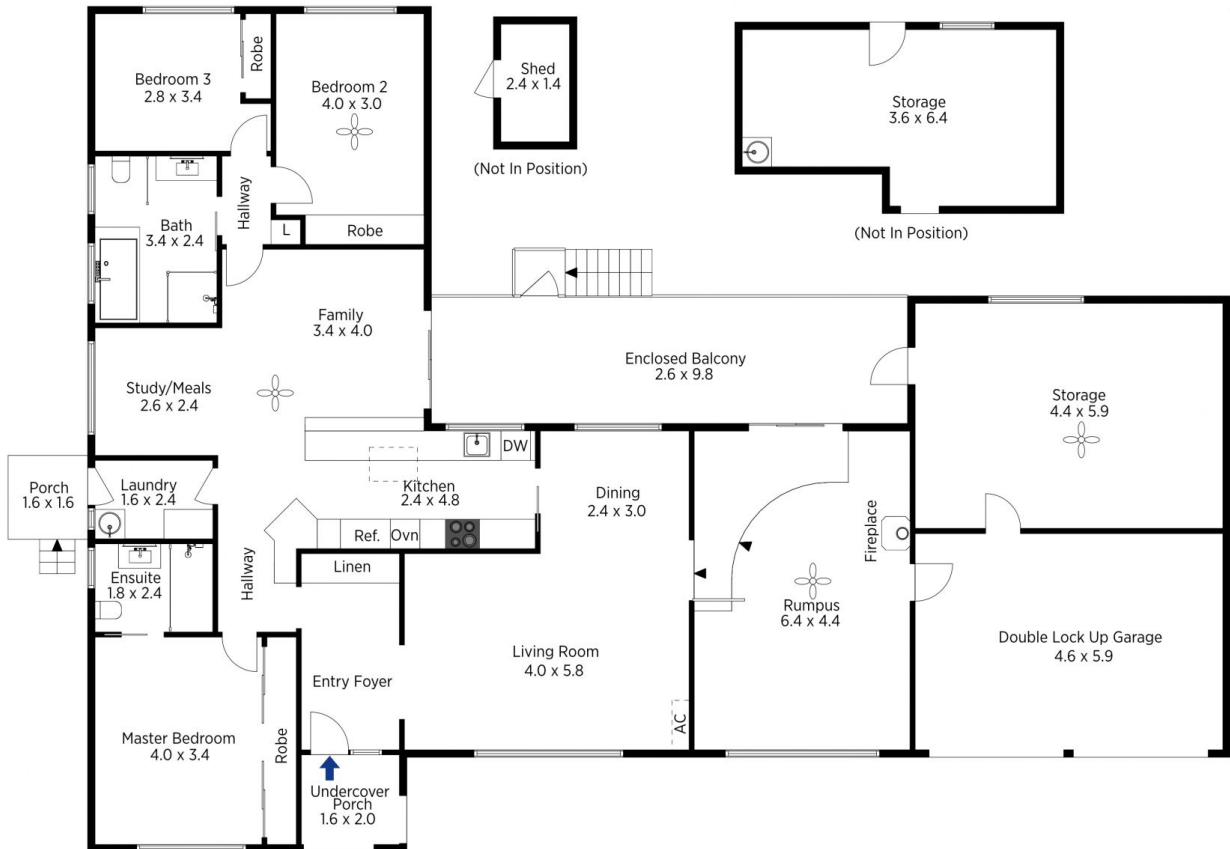


The floor plan is not to scale; measurements are indicative and in metres. All features included in this 3D plan are for inspiration purposes only. This is not an exact replica of the property or the position of exterior elements. Plans should not be relied on. Interested parties should make and rely on their own enquiries.

Produced by DIAKRIT

39 Heather Road, Winmalee

Chapman



The floor plan is not to scale; measurements are indicative and in metres. Exterior elements are not in position. Plans should not be relied on. Interested parties should make and rely on their own enquiries.

Produced by DIAKRIT

39 Heather Road, Winmalee

Chapman