



10/4 Echo Point Road KATOOMBA NSW

1 1 1

LOCATION: A highly desirable location in south Katoomba, only 170m from the iconic 3 Sisters and Echo Point which overlooks the stunning Jamison Valley. Situated on the bus route offering easy access to Katoomba town centre (1.5km) and Katoomba train station (1.9km).

STYLE: Large unit within a period Art Deco building with the luxury of a north facing aspect. Substantially built brick and tile building.

LAYOUT: Ground floor unit, open plan living/dining room leading to the new kitchen, large bedroom with built in robes, hallway with storage cupboard, light filled bathroom.

FEATURES: Lovely high ceilings, wooden floors, Art Deco details. Bright and sunny living area with north facing windows, new kitchen with gas cooking, large bedroom with built in robes and plantation shutters, generous linen

Type : Unit

Price : \$ 438,000

View : <https://www.chapmanrealestate.com.au/sale/nsw/blue-mountains-surrounds/katoomba/residential/unit/7161274>



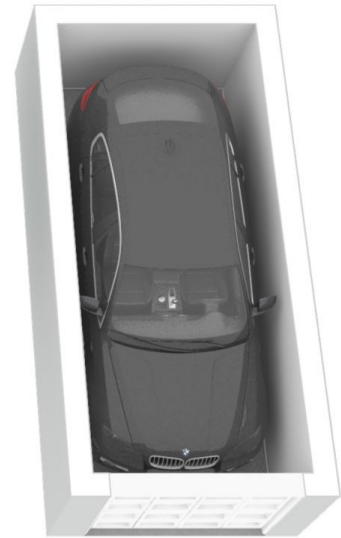
Hayley Clifton
02 4782 5045



James Simadas
02 4782 5045

[For full version visit the website](https://www.chapmanrealestate.com.au)

<https://www.chapmanrealestate.com.au>

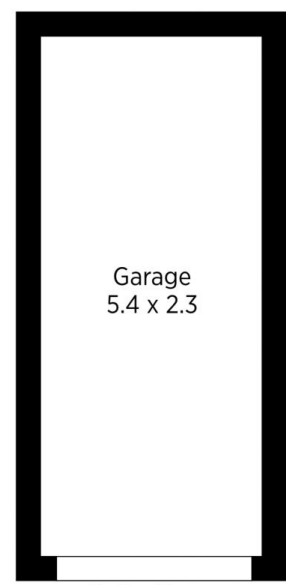
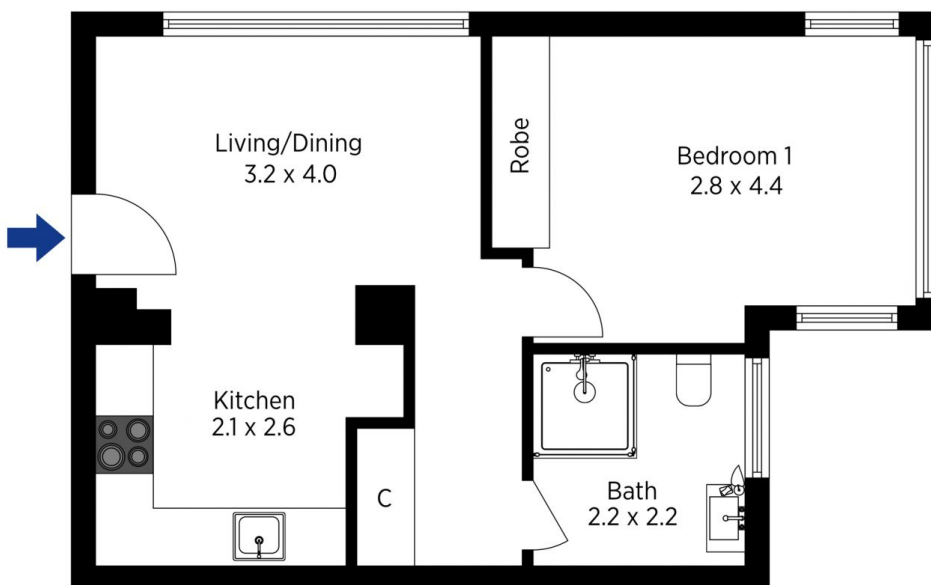


The floor plan is not to scale; measurements are indicative and in metres. All features included in this 3D plan are for inspiration purposes only. This is not an exact replica of the property or the position of exterior elements. Plans should not be relied on. Interested parties should make and rely on their own enquiries.

Produced by DIAKRIT

10/4 Echo Point Road, Katoomba

Chapman



Roller Door
(Not In Position)

The floor plan is not to scale; measurements are indicative and in metres. Exterior elements are not in position. Plans should not be relied on. Interested parties should make and rely on their own enquiries.

Produced by DIAKRIT

10/4 Echo Point Road, Katoomba

Chapman