



## 16a Hemmings Street Penrith NSW

2 1 1

**LOCATION:** Conveniently located right near the heart of Penrith CBD, approx 1.1km to Penrith train station and Westfield shopping centre, close to local schools, shops, parks and all the delights that Penrith has to offer.

**STYLE:** Gorgeous and incredibly private, this brick and tile home sits nestled on an approx 192m<sup>2</sup> flat, fully fenced block.

**LAYOUT:** Easy living floor plan consisting of two generous bedrooms, open plan lounge/dining room leading to a bright & sunny kitchen, main family bathroom & internal laundry.

**FEATURES:** Well appointed kitchen with ample bench & storage space, master & second bedroom both have built in wardrobes, bathroom with shower & separate bath, polished timber floors, glass doors leading out to a stunning

**Type** : House  
**Price** : \$ 630,000  
**Land Size** : 192 sqm  
**View** : <https://www.chapmanrealestate.com.au/sale/nsw/western-sydney/penrith/residential/house/7161271>



**Sarah Watson**  
02 4739 4311



**Rachel Power**  
02 4739 4311

[For full version visit the website](#)

16A HEMMINGS STREET, PENRITH

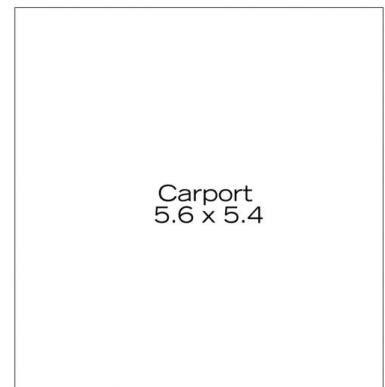
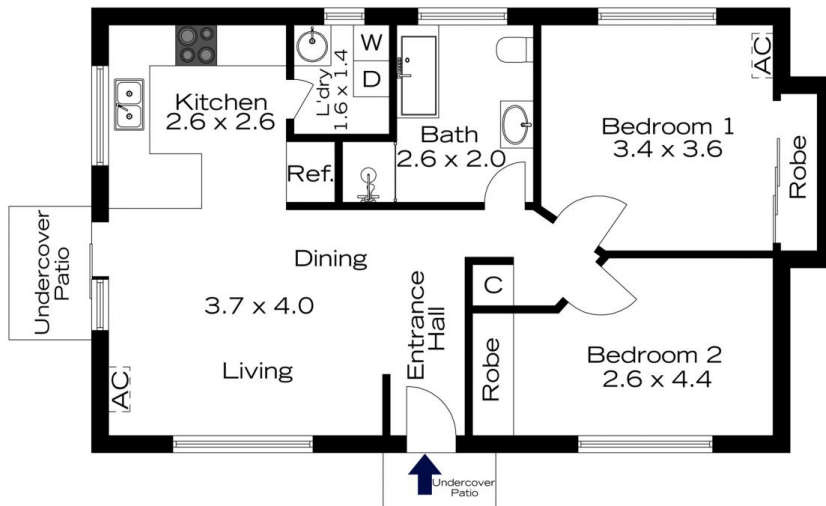


**INTERNAL**  
69 m<sup>2</sup>  
**EXTERNAL**  
4 m<sup>2</sup>  
**TOTAL**  
73 m<sup>2</sup>



The floor plan is not to scale; measurements are indicative and in metres. All features included in this 3D plan are for inspiration purposes only. This is not an exact replica of the property or the position of exterior elements. Plans should not be relied on. Interested parties should make and rely on their own enquiries.

16A HEMMINGS STREET, PENRITH



**INTERNAL**  
69 m<sup>2</sup>  
**EXTERNAL**  
4 m<sup>2</sup>  
**TOTAL**  
73 m<sup>2</sup>



The floor plan is not to scale; measurements are indicative and in metres. Exterior elements are not in position. Plans should not be relied on. Interested parties should make and rely on their own enquiries.