



**5 Red-Crowned Court Winmalee NSW**

5 2 2

**LOCATION** - Small, quiet cul de sac location close to schools, shops, transport, bushwalks & bike tracks.

**STYLE** - Large high set brick and colourbond home on large useable block of 1156m2.

**LAYOUT** - 2 living rooms, 5 bedrooms (4 double size with built ins), including master with walk-in robe & ensuite, kitchen flows to large mostly level yard, internal access to double lock up garage.

**FEATURES** - Air conditioning, ceiling fans, new carpet, modern decor throughout, powder room, huge fenced grassy, mostly level yard, internal laundry. Generous home in quiet leafy setting.

**Disclaimer:** All information contained herein is gathered from sources we believe to be reliable. However, we cannot guarantee its accuracy and interested persons should rely on their own inquiries.

**Price** : \$ 720,000  
**Land Size** : 1156 sqm  
**View** : <https://www.chapmanrealestate.com.au/sale/nsw/hawkesbury/winmalee/residential/house/7161267>



**Jonathan Crisp**  
02 4751 8266



**Mark Poole**  
02 4751 8266

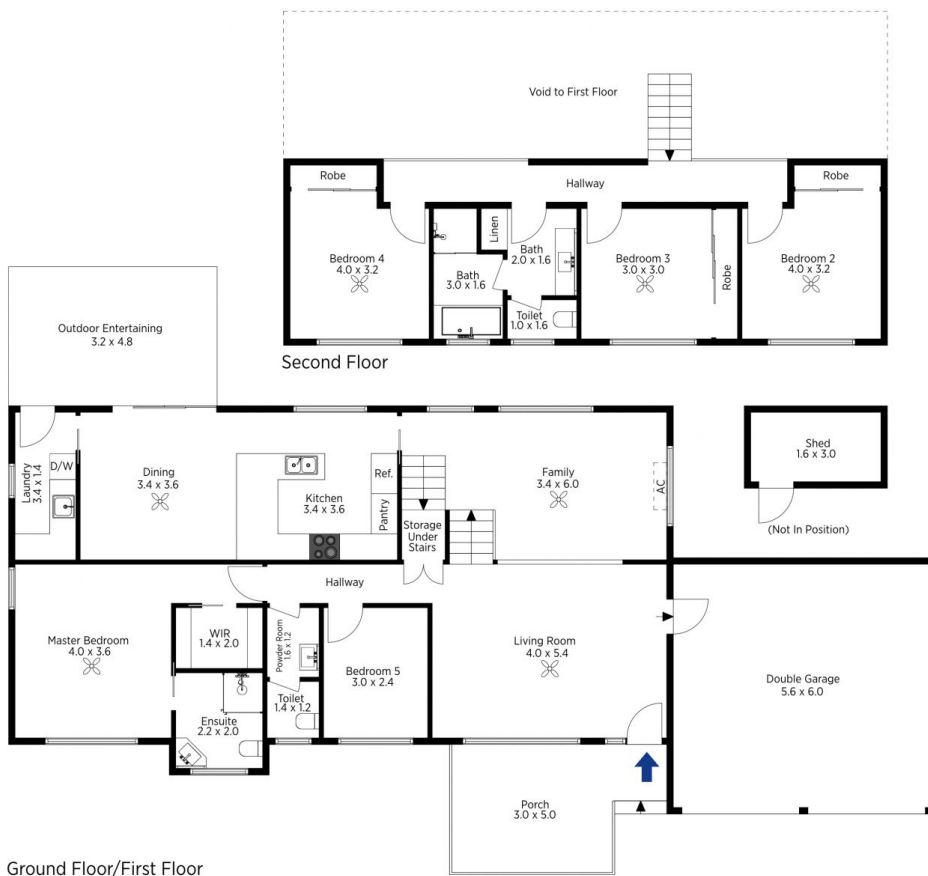
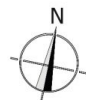


The floor plan is not to scale; measurements are indicative and in metres. All features included in this 3D plan are for inspiration purposes only. This is not an exact replica of the property or the position of exterior elements. Plans should not be relied on. Interested parties should make and rely on their own enquiries.

Produced by DIAKRIT

5 Red-Crowned Court, Winmalee

Chapman



The floor plan is not to scale; measurements are indicative and in metres. Exterior elements are not in position. Plans should not be relied on. Interested parties should make and rely on their own enquiries.

Produced by DIAKRIT

5 Red-Crowned Court, Winmalee

Chapman