



**19 The Road Penrith NSW**

3 2 1

**LOCATION:** Ideally located approximately 2.2km (5 Minute) drive to Penrith train station, buses, Westfield shopping centre, local schools & parks. Offering a peaceful, idyllic location whilst still only moments from all the amenities & services on offer in the hub of bustling Penrith.

**STYLE:** Immaculately presented single level rendered brick & tile home on an approximately 855m2 exquisitely landscaped garden block.

**LAYOUT:** Seamlessly combining modern & easy living, three bedrooms, master with walk in robe & ensuite bathroom, flexible 4th bedroom/office/living room, large sunlit formal lounge, open plan kitchen and dining, family bathroom with separate toilet, large laundry leading directly outside & incredible entertainers alfresco area.

**FEATURES:** Gourmet kitchen with 40mm stone waterfall

**Type** : House  
**Price** : \$ 1,025,000  
**Land Size** : 855 sqm  
**View** : <https://www.chapmanrealestate.com.au/sale/nsw/western-sydney/penrith/residential/house/7161266>



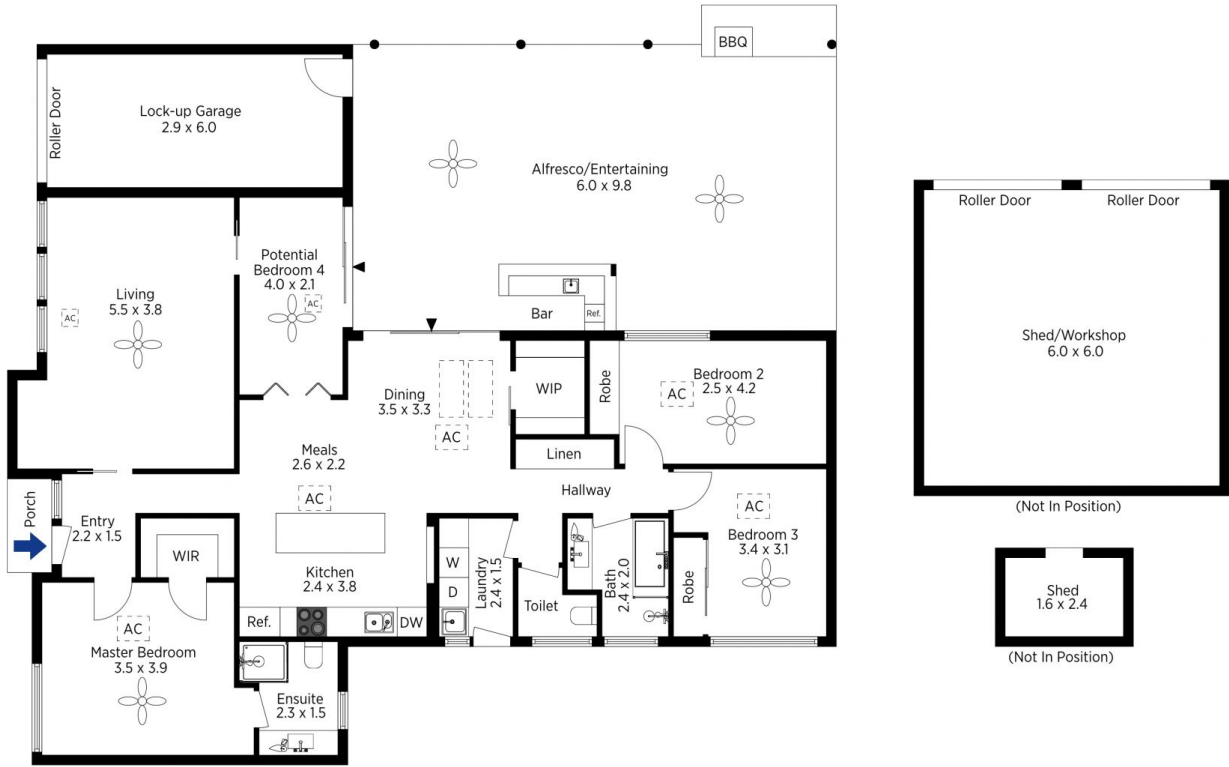
**Sarah Watson**  
02 4739 4311



**Rachel Power**  
02 4739 4311

[For full version visit the website](#)





The floor plan is not to scale; measurements are indicative and in metres. Exterior elements are not in position. Plans should not be relied on. Interested parties should make and rely on their own enquiries.

Produced by DIAKRIT

19 The Road, Penrith

Chapman



The floor plan is not to scale; measurements are indicative and in metres. All features included in this 3D plan are for inspiration purposes only. This is not an exact replica of the property or the position of exterior elements. Plans should not be relied on. Interested parties should make and rely on their own enquiries.

Produced by DIAKRIT

19 The Road, Penrith

Chapman