



## 16 Riches Avenue Woodford NSW

4 1

**LOCATION** -Nestled in a quiet street, offering a peaceful Mountains lifestyle, with access to an abundance of local bushwalks and trails, 1.7km to train station, 1.5m to local café, 2.8km to Hazelbrook Village with an assortment of specialty shops, café's, supermarket day and also multiple local school's.

**STYLE** - A charming cedar clad cottage set on a 4459m2 block with stunning bush views across the valley.

**LAYOUT** - Open plan lounge and dining room flowing through to the kitchen, upstairs features three large bedrooms with high pitched timber ceilings, separate oversized main bedroom with large windows allowing for lots of natural light, large central bathrooms with corner spa

[For full version visit the website](https://www.chapmanrealestate.com.au)

**Type** : House  
**Price** : \$ 930,000  
**Land Size** : 4459 sqm  
**View** : <https://www.chapmanrealestate.com.au/sale/nsw/blue-mountains-surrounds/woodford/residential/house/7161263>



**Jonathan Crisp**  
02 4751 8266

# 16 RICHES AVENUE, WOODFORD



First Floor



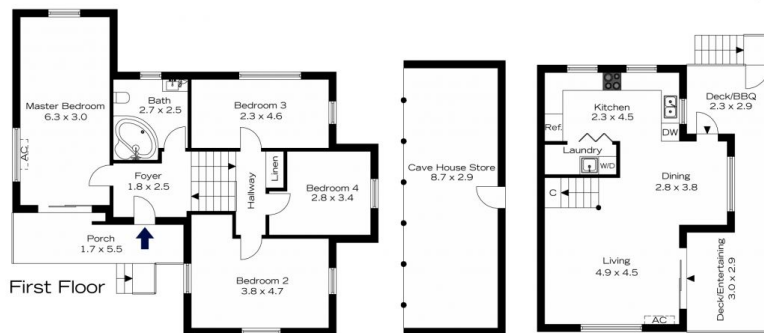
Ground Floor

**INTERNAL**  
133 m<sup>2</sup>  
**EXTERNAL**  
57 m<sup>2</sup>  
**TOTAL**  
190 m<sup>2</sup>



The floor plan is not to scale; measurements are indicative and in metres. All features included in this 3D plan are for inspiration purposes only. This is not an exact replica of the property or the position of exterior elements. Plans should not be relied on. Interested parties should make and rely on their own enquiries.

# 16 RICHES AVENUE, WOODFORD



First Floor

Lower Ground Ground Floor

**INTERNAL**  
133 m<sup>2</sup>  
**EXTERNAL**  
57 m<sup>2</sup>  
**TOTAL**  
190 m<sup>2</sup>



The floor plan is not to scale; measurements are indicative and in metres. Exterior elements are not in position. Plans should not be relied on. Interested parties should make and rely on their own enquiries.