



6/11 Hope Street Blaxland NSW

3 1 1

LOCATION - Conveniently positioned across the road from Blaxland town centre, this townhouse is within 500m to local shops, cafes, amenities and transport services.

STYLE - Brick and tile three bedroom townhouse.

LAYOUT - Main living, separate formal dining, three bedrooms, bathroom with bath tub, internal laundry, additional powder room downstairs, outdoor courtyard.

FEATURES - Built-in wardrobes, air conditioning, stainless steel appliances, lock up garage and a common pool within the complex.

Disclaimer:

All information contained herein is gathered from sources we believe to be reliable. However, we cannot guarantee its accuracy and interested persons should rely on their

[For full version visit the website](https://www.chapmanrealestate.com.au)

Type : Townhouse

Price : \$ 535,000

View : <https://www.chapmanrealestate.com.au/sale/nsw/blue-mountains-surrounds/blaxland/residential/townhouse/7161262>



Jonathan Crisp
02 4751 8266



James Simadas
02 4782 5045



First Floor



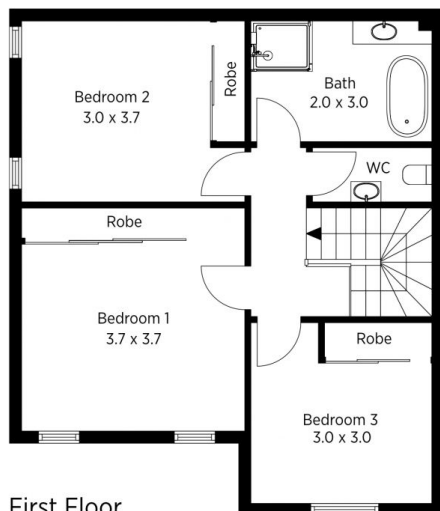
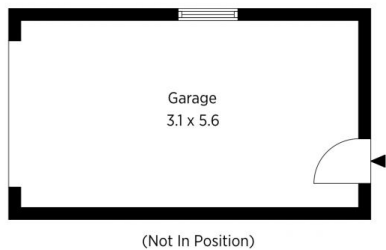
Ground Floor

The floor plan is not to scale; measurements are indicative and in metres. All features included in this 3D plan are for inspiration purposes only. This is not an exact replica of the property or the position of exterior elements. Plans should not be relied on. Interested parties should make and rely on their own enquiries.

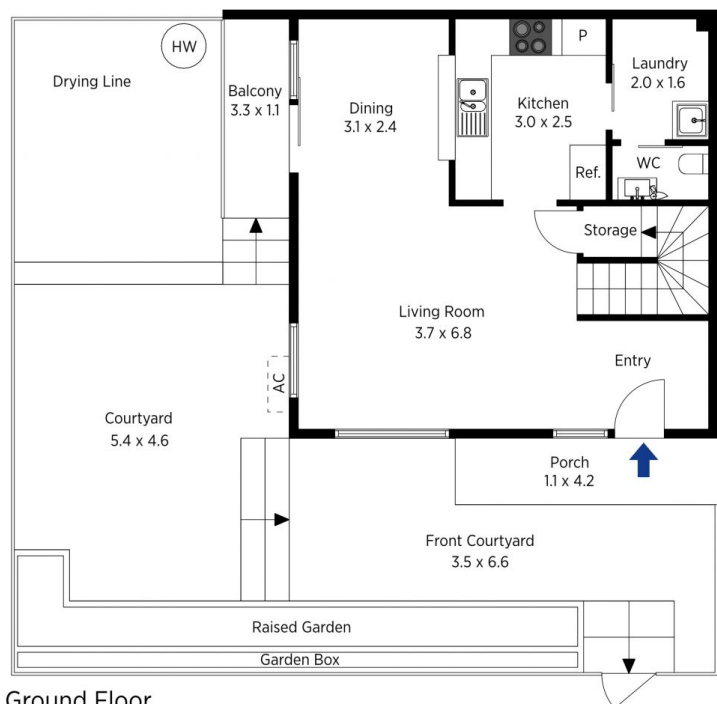
Produced by DIAKRIT

6 / 11 Hope Street, Blaxland

Chapman



First Floor



Ground Floor

The floor plan is not to scale; measurements are indicative and in metres. Exterior elements are not in position. Plans should not be relied on. Interested parties should make and rely on their own enquiries.

Produced by DIAKRIT

6 / 11 Hope Street, Blaxland

Chapman