



58 Mount Hay Road Leura NSW

3 2 1

LOCATION - Enjoying a lovely bush setting with views across the valley, and within 1.8kms of Leura Village, shops, cafes and rail services.

STYLE - Beautiful timber clad mountains cottage over 2 levels, on approximately 2600m2 of private bush.

LAYOUT - A large open plan living and dining room, with towering centre piece skylight ceiling. Open plan chef's kitchen with Island bench. Main bedroom, walk in robe and en-suite bathroom on entry level. Versatile lower floor with two more bedrooms, study, bathroom and private out door alfresco deck.

FEATURES - Light filled living with slow combustion fire, natural gas heating and air conditioning. Polished floor boards and panoramic windows. Wonderful alfresco out door decks on each level taking in the serene bush valley

Type : House
Price : \$ 656,000
Land Size : 2611 sqm
View : <https://www.chapmanrealestate.com.au/sale/nsw/blue-mountains-surrounds/leura/residential/house/7161255>



James Simadas
02 4782 5045

[For full version visit the website](https://www.chapmanrealestate.com.au)

<https://www.chapmanrealestate.com.au>



Ground Floor



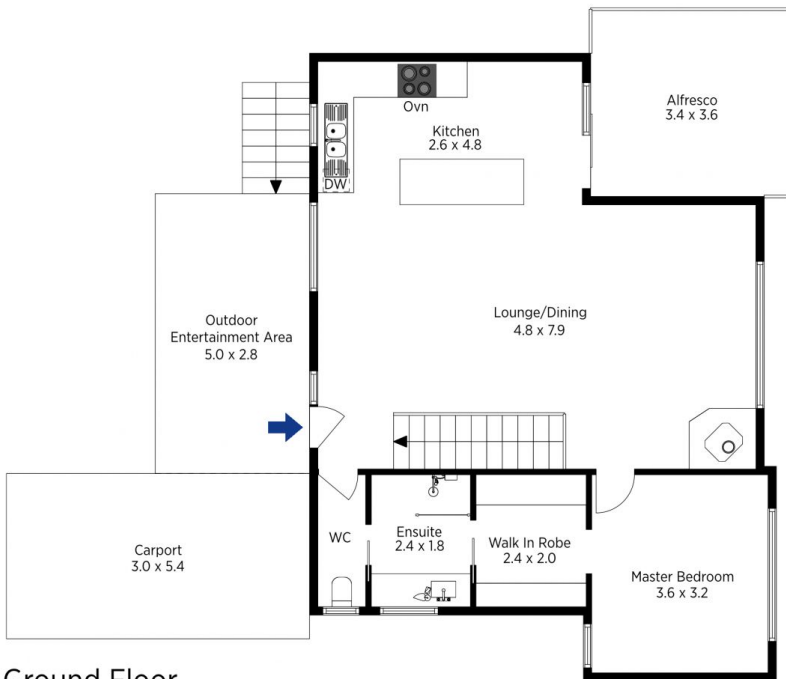
Lower Ground Floor

The floor plan is not to scale; measurements are indicative and in metres. All features included in this 3D plan are for inspiration purposes only. This is not an exact replica of the property or the position of exterior elements. Plans should not be relied on. Interested parties should make and rely on their own enquiries.

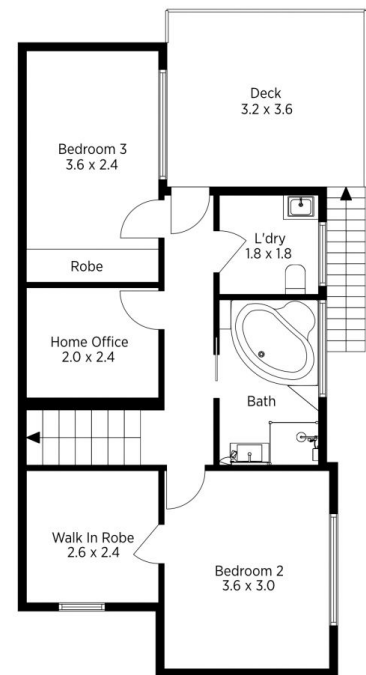
Produced by DIAKRIT

58 Mount Hay Road, Leura

Chapman



Ground Floor



Lower Ground Floor

The floor plan is not to scale; measurements are indicative and in metres. Exterior elements are not in position. Plans should not be relied on. Interested parties should make and rely on their own enquiries.

Produced by DIAKRIT

58 Mount Hay Road, Leura

Chapman