



## 27 Bridge Road Blaxland NSW

4 2 1

**LOCATION** - Quietly positioned backing to bushland, yet only 1km to rail, shops and parks.

**STYLE** - Double storey brick and tile residence with feature cladding

**LAYOUT** - Open plan living, dining and kitchen. 2nd living room upstairs 4 bedrooms, all with built-in robes. Study. 2 modern bathrooms and third toilet. Oversize covered alfresco.

**FEATURES** - Enjoying a stunning bush back drop, enhanced by multiple decks taking in the ambience of living in the Blue Mountains, this wonderful family home has polished floor boards on the lower level and floating timber floors upstairs, a slow combustion fire and air-conditioning. The well laid out kitchen includes stone bench tops, stainless steel gas cook top, wall oven and dishwasher.

**Type** : House  
**Price** : \$ 800,000  
**Building Size** : 156 sqm  
**Land Size** : 2447 sqm  
**View** : <https://www.chapmanrealestate.com.au/sale/nsw/blue-mountains-surrounds/blaxland/residential/house/7161251>



**James Simadas**  
02 4792 5045

[For full version visit the website](https://www.chapmanrealestate.com.au)

<https://www.chapmanrealestate.com.au>



Ground Floor



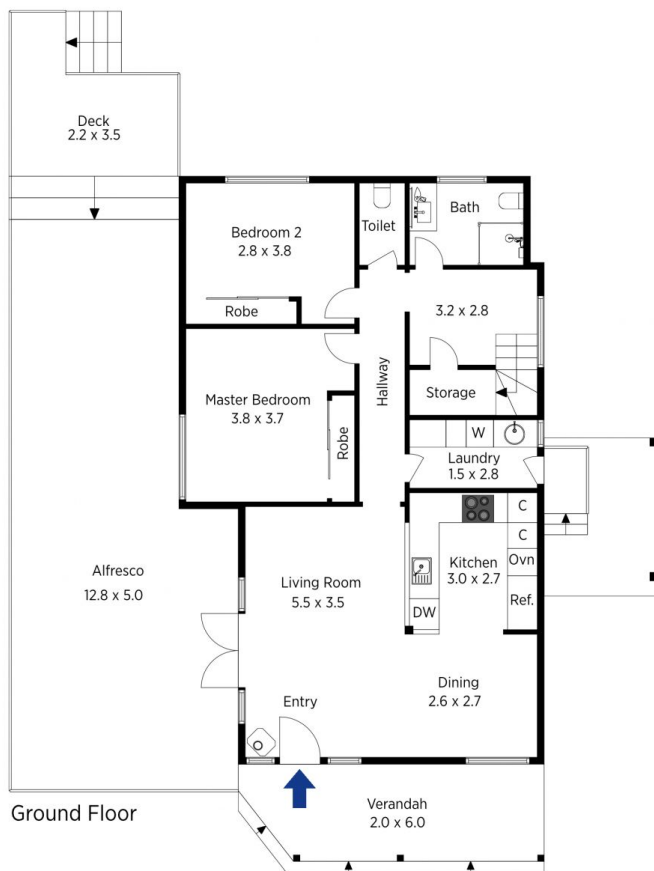
First Floor

The floor plan is not to scale; measurements are indicative and in metres. All features included in this 3D plan are for inspiration purposes only. This is not an exact replica of the property or the position of exterior elements. Plans should not be relied on. Interested parties should make and rely on their own enquiries.

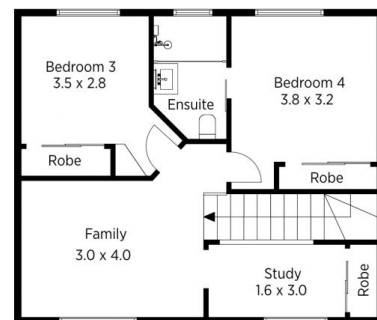
Produced by DIAKRIT

27 Bridge Road, Blaxland

Chapman



Ground Floor



First Floor

The floor plan is not to scale; measurements are indicative and in metres. Exterior elements are not in position. Plans should not be relied on. Interested parties should make and rely on their own enquiries.

Produced by DIAKRIT

27 Bridge Road, Blaxland

Chapman