



47 Allen Street Blaxland NSW

6 3 3

LOCATION - Privately positioned within "Explorers Estate" surrounded by quality homes. Approx. 800m to village shops, services, cafes and rail, convenient to bus, parks and local schools.

STYLE - Spacious & Modern 2 storey family home with beautiful detailing. Thoughtfully designed to accommodate the whole family whilst offering an effortless flow through out the home.

LAYOUT - Multiple grand living rooms - formal & informal dining and living, 5 queen size bedrooms (hotel style master w/ walk through robe, ensuite & Juliette balcony), ideal 6th guest room / in law accommodation (located on entry level) with ensuite access. 3 bathrooms overall.

FEATURES - Open-plan kitchen, Ceasarstone tops, 900mm gas cook top, ducted AC, remote control gas fire

Type : House
Price : \$ 1,100,000
Land Size : 1215 sqm
View : <https://www.chapmanrealestate.com.au/sale/nsw/blue-mountains-surrounds/blaxland/residential/house/7161247>



Milton Player
02 4739 4311

[For full version visit the website](https://www.chapmanrealestate.com.au)

<https://www.chapmanrealestate.com.au>



First Floor



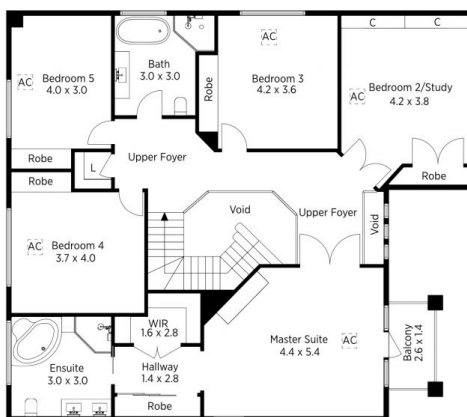
Ground Floor

The floor plan is not to scale; measurements are indicative and in metres. All features included in this 3D plan are for inspiration purposes only. This is not an exact replica of the property or the position of exterior elements. Plans should not be relied on. Interested parties should make and rely on their own enquiries.

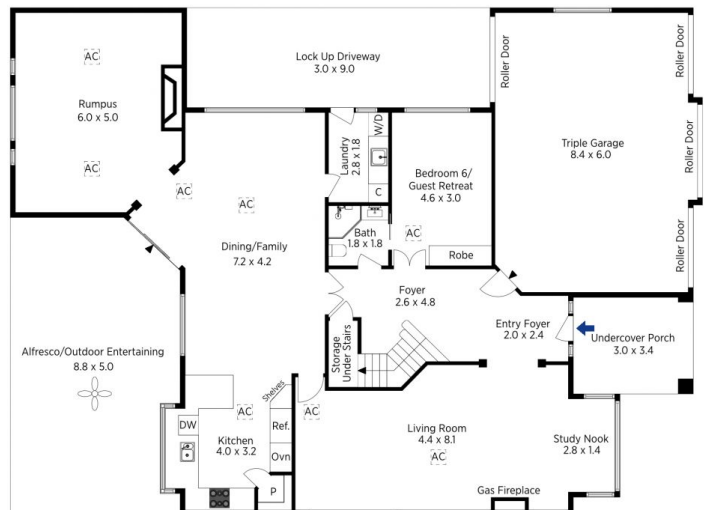
Produced by DIAKRIT

47 Allen Street, Blaxland

Chapman



First Floor



Ground Floor

The floor plan is not to scale; measurements are indicative and in metres. Exterior elements are not in position. Plans should not be relied on. Interested parties should make and rely on their own enquiries.

Produced by DIAKRIT

47 Allen Street, Blaxland

Chapman