



### 1/14 Bruce Road Glenbrook NSW

3 1 1

**LOCATION** - High set commanding position with a leafy, bush outlook. Conveniently situated mid way between Glenbrook Village shops and the National Park. Enjoy close proximity (approx. 500m) to Glenbrook Rail, moments to parks, ovals, shops, theatre, tennis courts, camping grounds and natural swimming holes.

**STYLE** - Duplex - split level in design with an intimate and private feel through out. Of brick and Colorbond roof construction.

**LAYOUT** - Light filled living room flowing into the dining area and open kitchen, 3 bedrooms with built-in robes, bathroom with separate toilet, internal laundry.

**FEATURES** - Open plan kitchen overlooking the front garden, split system air conditioning, slow combustion wood burner, ceiling fans, timber style flooring, raked

**Type** : Semi Detached

**Price** : \$ 675,000

**View** : <https://www.chapmanrealestate.com.au/sale/nsw/blue-mountains-surrounds/glenbrook/residential/semi-detached/7161243>

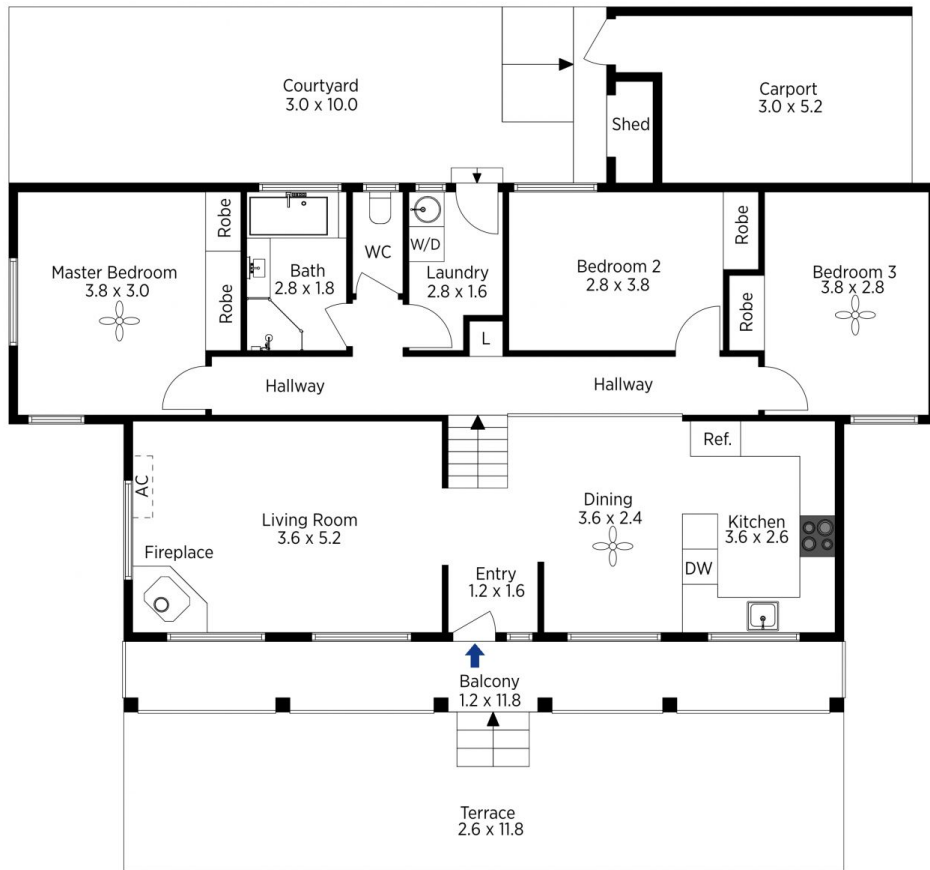


**Milton Player**  
02 4739 4311

[For full version visit the website](https://www.chapmanrealestate.com.au)

<https://www.chapmanrealestate.com.au>





The floor plan is not to scale; measurements are indicative and in metres. Exterior elements are not in position. Plans should not be relied on. Interested parties should make and rely on their own enquiries.

Produced by DIAKRIT

1/14 Bruce Rd, Glenbrook

Chapman



The floor plan is not to scale; measurements are indicative and in metres. All features included in this 3D plan are for inspiration purposes only. This is not an exact replica of the property or the position of exterior elements. Plans should not be relied on. Interested parties should make and rely on their own enquiries.

Produced by DIAKRIT

1/14 Bruce Rd, Glenbrook

Chapman